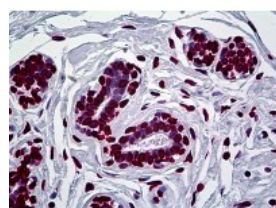




EN1 Antibody [3H2]

CATALOG NUMBER: 51-696



Immunohistochemistry of human breast tissue stained using EN1 Monoclonal Antibody.

Specifications

SPECIES REACTIVITY:	Human
TESTED APPLICATIONS:	ELISA, IHC, WB
APPLICATIONS:	EN1 antibody can be used in Western Blot starting at 0.5 - 2 ug/mL, and immunohistochemistry starting at 10 ug/mL.
USER NOTE:	Optimal dilutions for each application to be determined by the researcher.
IMMUNOGEN:	Recombinant protein
HOST SPECIES:	Mouse

Properties

PURIFICATION:	Protein A Column
PHYSICAL STATE:	Liquid
BUFFER:	PBS, pH 7.2
STORAGE CONDITIONS:	EN1 antibody can be stored short term 4 °C. For long term storage aliquot and store at -20 °C. As with all antibodies avoid freeze/thaw cycles.
CLONALITY:	Monoclonal
ISOTYPE:	IgG2a,k
CONJUGATE:	Unconjugated

Additional Info

ALTERNATE NAMES:	EN1, Engrailed 1, Engrailed homolog 1, Homeobox protein en-1, Homeobox protein engrailed-1, Hu-En-1, Engrailed homeobox 1
ACCESSION NO.:	Q05925
PROTEIN GI NO.:	215274149
OFFICIAL SYMBOL:	EN1
GENE ID:	2019

FOR RESEARCH USE ONLY

December 13, 2016