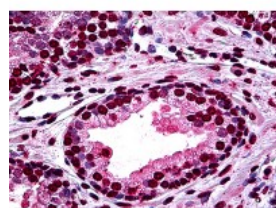




DLX2 Antibody [2C8]

CATALOG NUMBER: 51-694



Immunohistochemistry of human prostate tissue stained using DLX2 Monoclonal Antibody.

Specifications

SPECIES REACTIVITY:	Human, Mouse
TESTED APPLICATIONS:	ELISA, IHC, WB
APPLICATIONS:	DLX2 antibody can be used in Western Blot starting at 1 - 3 ug/mL, and immunohistochemistry starting at 10 ug/mL.
USER NOTE:	Optimal dilutions for each application to be determined by the researcher.
IMMUNOGEN:	Recombinant protein
HOST SPECIES:	Mouse

Properties

PURIFICATION:	Protein A Column
PHYSICAL STATE:	Liquid
BUFFER:	PBS, pH 7.2
STORAGE CONDITIONS:	DLX2 antibody can be stored short term 4 °C. For long term storage aliquot and store at -20 °C. As with all antibodies avoid freeze/thaw cycles.
CLONALITY:	Monoclonal
ISOTYPE:	IgG2a,k
CONJUGATE:	Unconjugated

Additional Info

ALTERNATE NAMES:	DLX2, Distal-less homeo box 2, Distal-less homeobox 2, TES1, Homeobox protein DLX-2, TES-1
ACCESSION NO.:	Q07687
PROTEIN GI NO.:	2506529
OFFICIAL SYMBOL:	DLX2
GENE ID:	1746

Background

