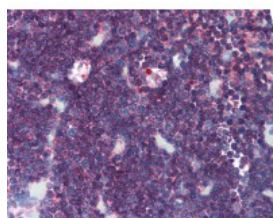




PTPRC Antibody [F10-89-4]

CATALOG NUMBER: 51-662



Immunohistochemistry of human thymus tissue stained using PTPRC Monoclonal Antibody.

Specifications

SPECIES REACTIVITY:	Human
TESTED APPLICATIONS:	FACS, IHC
APPLICATIONS:	PTPRC antibody can be used in immunohistochemistry starting at 10 ug/mL.
USER NOTE:	Optimal dilutions for each application to be determined by the researcher.
SPECIFICITY:	Recognizes the human CD45 cell surface antigen, also known as the leucocyte common antigen (LCA). CD45 is a complex molecule existing in a number of isoforms. Antibodies recognizing a common epitope on all of these isoforms are termed CD45 whilst the ...
IMMUNOGEN:	Human T lymphocytes
HOST SPECIES:	Mouse

Properties

PURIFICATION:	Protein G Column
PHYSICAL STATE:	Liquid
BUFFER:	PBS, pH 7.4, 0.09% sodium azide, 1% BSA.
STORAGE CONDITIONS:	Store PTPRC antibody at 4 °C or -20 °C. As with all antibodies avoid freeze/thaw cycles.
CLONALITY:	Monoclonal
ISOTYPE:	IgG2a
CONJUGATE:	Unconjugated

Additional Info

ALTERNATE NAMES:	PTPRC, B220, CD45R, CD45, gp180, Leukocyte common antigen, L-CA, Leucocyte common antigen, LY5, T200, T200 glycoprotein, T200 leukocyte common antigen, CD45 antigen, LCA
ACCESSION NO.:	P08575
PROTEIN GI NO.:	33112650
OFFICIAL SYMBOL:	PTPRC
GENE ID:	5788

