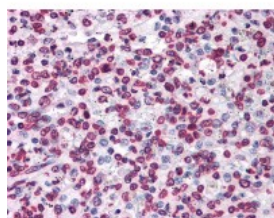




TOP2A Antibody [1E2]

CATALOG NUMBER: 51-523



Immunohistochemistry of human spleen tissue stained using TOP2A Monoclonal Antibody.

Specifications

SPECIES REACTIVITY:	Human
TESTED APPLICATIONS:	ELISA, IF, IHC, WB
APPLICATIONS:	TOP2A antibody can be used in Western Blot, immunohistochemistry starting at 1:50, and immunofluorescence.
USER NOTE:	Optimal dilutions for each application to be determined by the researcher.
IMMUNOGEN:	TOP2A (NP_001058, 1435 a.a. ~ 1532 a.a) partial recombinant protein with GST tag. MW of the GST tag alone is 26 KDa.
HOST SPECIES:	Mouse

Properties

PURIFICATION:	Protein A Column
PHYSICAL STATE:	Liquid
BUFFER:	PBS, pH 7.2
STORAGE CONDITIONS:	Store TOP2A antibody at -20 °C. Aliquot to avoid freeze/thaw cycles.
CLONALITY:	Monoclonal
ISOTYPE:	IgG1,k
CONJUGATE:	Unconjugated

Additional Info

ALTERNATE NAMES:	TOP2A, DNA topoisomerase II, 170 kD, TOP2, DNA gyrase, DNA topoisomerase 2-alpha, TP2A
ACCESSION NO.:	P11388
PROTEIN GI NO.:	13959709
OFFICIAL SYMBOL:	TOP2A
GENE ID:	7153

Background

