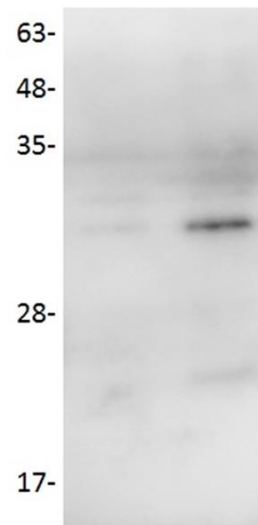


## Chicken Growth Hormone Antibody

<b>CATALOG NO:</b>	6648-30T 30 µg (Trial size) 6648-100 100 µg
<b>ALTERNATE NAME:</b>	Somatotropin
<b>CONCENTRATION:</b>	0.5 mg/ml
<b>IMMUNOGEN:</b>	Recombinant protein chicken GH (Cat. No. 4771-100)
<b>INTERNAL ID:</b>	BV- N6
<b>HOST:</b>	Rabbit
<b>SPECIES REACTIVITY:</b>	Chicken
<b>PURIFICATION:</b>	Affinity purified rabbit IgG
<b>FORMULATION:</b>	Supplied in PBS pH 7.2, 0.01 % BSA, 0.01 % thimerosal, and 50 % glycerol.
<b>STORAGE CONDITIONS:</b>	Store at -20°C. For long term storage, aliquot and freeze at -70°C. Avoid repeated freeze/thaw cycles.
<b>DESCRIPTION:</b>	GH is a member of the somatotropin/prolactin family of hormones which play an important role in growth control. It is a 191-amino acid, single chain polypeptide hormone which is synthesized, stored, and secreted by the somatotroph cells within the lateral wings of the anterior pituitary gland. The gene, along with four other related genes, is located at the growth hormone locus on chromosome 17 where they are interspersed in the same transcriptional orientation; an arrangement which is thought to have evolved by a series of gene duplications. The five genes share a remarkably high degree of sequence identity. Alternative splicing generates additional isoforms of each of the five growth hormones, leading to further diversity and potential for specialization. This particular family member is expressed in the pituitary but not in placental tissue as is the case for the other four genes in the growth hormone locus.
<b>APPLICATION:</b>	Western blot: 1:200  <b>Note:</b> This information is only intended as a guide. The optimal dilutions must be determined by the user.



### RELATED PRODUCTS:

- Growth Hormone, human recombinant (**Cat. No. 4769-100, -500, -5000**)
- Growth Hormone, murine recombinant (**Cat. No. 4770-50, -1000**)
- GH (Growth Hormone) Antibody (**Cat. No. 5769-100**)
- GHRH, human recombinant (**Cat. No. 4784-500**)
- Human CellExp™ HGH, Human Recombinant (**Cat. No. 6457-10, -50**)
- Growth Hormone, chicken recombinant (**Cat. No. 4771-50, -500**)

**FOR RESEARCH USE ONLY! Not to be used on humans.**