

SCF Antibody

ALTERNATE NAMES: Kit ligand Precursor, C-kit ligand, SCF, Mast cell growth factor, MGF, SF, KL-1, Kit I, DKFZp686F2250.

CATALOG #: 6646-100

AMOUNT: 100 µg

HOST: Rabbit

ISOTYPE: IgG

IMMUNOGEN: Recombinant Human SCF (BV-M73)

PURIFICATION: Affinity purified rabbit IgG

FORM: Liquid

FORMULATION: 100 µg (0.5 mg/ml) of antibody in PBS pH 7.2, containing 0.01 % BSA, 0.01 % thimerosal, and 50 % glycerol,

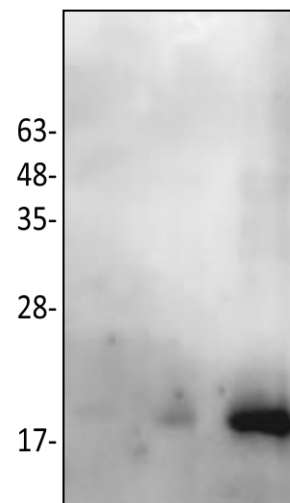
SPECIES REACTIVITY: Human

STORAGE CONDITIONS: Store for 1 year at -20°C from date of shipment. Avoid repeated freeze/thaw cycles.

DESCRIPTION: Stem cell factor / KIT ligand (SCF) is a cytokine which binds CD117(c-Kit). SCF is also known as "steel factor" or "c-kit ligand". SCF exists in two forms; cell surface bound SCF and soluble (or free) SCF. Soluble SCF is produced by the cleavage of surface bound SCF by metalloproteases. SCF is a growth factor important for the survival, proliferation, and differentiation of hematopoietic stem cells and other hematopoietic progenitor cells. One of its roles is to change the BFU-E (burst-forming unit-erythroid) cells, which are the earliest erythrocyte precursors in the erythrocytic series, into the CFU-E (colony-forming unit-erythroid).

APPLICATION: Western blot: ~1:200

Note: This information is only intended as a guide. The optimal dilutions must be determined by the user.



Western blot with SCF antibody.

Lane 1: SCF 2 ng.

Lane 2: SCF 10 ng.

Lane 3: SCF 50 ng.

RELATED PRODUCTS:

- Human Cell^{exp} Human Recombinant SCF (Cat # 6478-10, -50)
- SCF, human recombinant (Cat # 4327-10, -50, -1000)
- SCF, murine recombinant (Cat # 4328-10, -50, -1000)
- SCF, rat recombinant (Cat # 4329-10, -50, -1000)
- SCF Antibody (Cat # 5327-100)
- SCF Antibody (Cat # 5328-100)
- SCF Antibody (Cat # 5329R-100)

FOR RESEARCH USE ONLY! Not to be used on humans.