

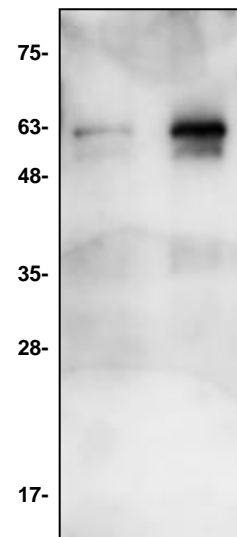
# ApoJ/Clusterin Antibody

<b>ALTERNATE NAMES:</b>	CLI, AAG4, KUB1, SGP2, SGP-2, SP-40, TRPM2, MGC24903, Clusterin, Apolipoprotein J, ApoJ
<b>CATALOG #:</b>	6668-100
<b>AMOUNT:</b>	100 µg
<b>HOST:</b>	Rabbit
<b>IMMUNOGEN:</b>	Recombinant human ApoJ/Clusterin protein (Cat # 7584)
<b>INTERNAL ID:</b>	BV-N51-52
<b>PURIFICATION:</b>	Affinity purified rabbit IgG
<b>FORM:</b>	Liquid
<b>FORMULATION:</b>	100 µg (0.5 mg/ml) of antibody in PBS pH7.2, 0.01 % BSA, 0.01 % thimerosal, and 50 % glycerol.
<b>SPECIES REACTIVITY:</b>	Human
<b>STORAGE CONDITIONS:</b>	Store at -20°C. Avoid repeated freeze/thaw cycles.

**DESCRIPTION:** Native Apolipoprotein J (ApoJ), also named Clusterin, is a heavily glycosylated, 75-80 kDa disulfide-linked heterodimeric protein. Despite being cloned since 1989, no genuine function has been attributed to ApoJ so far. The protein has been reportedly implicated in several diverse physiological processes such as sperm maturation, lipid transportation, complement inhibition, tissue remodeling, membrane recycling, cell-cell and cell-substratum interactions, and stabilization of stressed proteins in a folding-competent state and promotion or inhibition of apoptosis. ApoJ gene is differentially regulated by cytokines, growth factors and stress-inducing agents. Clusterin is up- or down regulated on the mRNA or protein level in many pathological and clinically relevant situations including cancer, organ regeneration, infection, Alzheimer disease, retinitis pigmentosa, myocardial infarction, renal tubular damage, autoimmunity and others.

**APPLICATION:** Western blot: 1-4 µg

**Note:** This information is only intended as a guide. The optimal dilutions must be determined by the user.



Western blot of ApoJ/ Clusterin antibody.  
Lane 1: Recombinant human ApoJ/ Clusterin - 2 ng.  
Lane 2: Recombinant human ApoJ/ Clusterin - 10 ng

## RELATED PRODUCTS:

- ApoJ/Clusterin, human recombinant **(7584-10, -50, -1000)**
- APO-J / Clusterin, human plasma **(4325-10, -500)**
- Apolipoprotein CI, Human Plasma **(Cat # 4703-100)**
- Apolipoprotein CII, Human Plasma **(Cat # 4704-50)**
- Apolipoprotein CIII, Human Plasma **(Cat # 4706-100)**

**FOR RESEARCH USE ONLY! Not to be used on humans.**