

Pro-IGF II, Human CellExp™, human recombinant

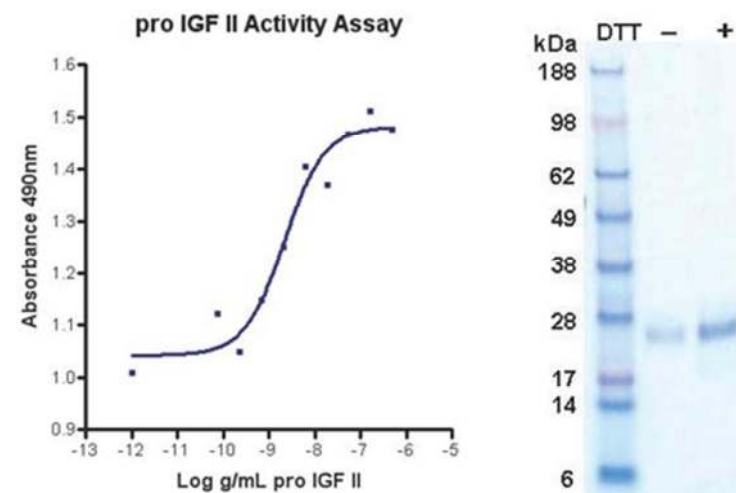
CATALOG #:	6477-10	10 µg
	6477-50	50 µg
ALTERNATE NAMES:	Pro-Insulin like Growth Factor-2, pro-IGF2.	
SOURCE:	Human 293 Cell Expressed	
PURITY:	> 95% by SDS - PAGE	
MOL. WEIGHT:	25 kDa, monomer, glycosylated	
ENDOTOXIN LEVEL:	< 1.0 EU per 1 µg of protein	
FORMULATION:	Lyophilized from a solution of 50 mM sodium acetate, pH 4.5, with 350 mM NaCl.	
RECONSTITUTION:	Reconstitute in sterile PBS containing 0.1% endotoxin-free recombinant human serum albumin.	
STORAGE CONDITIONS:	Aliquot and store at -20°C or -70°C. Avoid repeated freezing and thawing cycles.	
ADVANTAGES:	<ul style="list-style-type: none"> •Animal-derived product free •High Activity •Authentic Glycosylation 	

DESCRIPTION:

IGF-2 is a member of the insulin family of polypeptide growth factors that is involved in development and growth. It is an imprinted gene and is expressed only from the paternally inherited allele. It is a candidate gene for eating disorders. Two alternatively spliced transcript variants encoding the same protein have been found for this gene.

BIOLOGICAL ACTIVITY:

ED₅₀ is typically 2 to 8 ng/mL. The specific activity was determined by the dose-dependent stimulation of the proliferation of MCF-7 cells (human breast cancer cell line).



Human Cell^{exp} Human Recombinant Pro-IGF II

RELATED PRODUCTS:

- IGF-II, human recombinant (Cat # 4122-10, -50, -1000)
- IGF-II Antibody (Cat # 5122-100)
- IGF-I, human recombinant (Cat # 4119-100, -1000, -5000, -1MG, -10MG, -20MG, -50MG, 1G)
- IGF-BPI, human recombinant (Cat # 4717-10, -25, -100, -1000)
- IGF-BP3, human recombinant (Cat # 4720-25, -100, -1000)
- IGF-BP5, human recombinant (Cat # 4723-25, -100, -1000)
- IGF-I, murine recombinant (Cat # 4120-20, -50, -100, -1000)
- IGF-I, rat recombinant (Cat # 4120-20, -100, -1000)
- Long R3 IGF-I, human recombinant (Cat # 4216-100, -1MG, -5MG, -20MG, -50MG, -1G)

FOR RESEARCH USE ONLY! Not to be used in humans.