

M-CSF, Human CellExp™, human recombinant

CATALOG #:	6455-10	10 µg
	6455-50	50 µg
ALTERNATE NAMES:	Macrophage Colony Stimulating Factor, CSF-1, Lanimostim, MCSF, MGC31930, M-CSF.	
SOURCE:	Human 293 Cell Expressed	
PURITY:	> 95% by SDS - PAGE	
MOL. WEIGHT:	35 and 40 kDa, homodimer, glycosylated	
ENDOTOXIN LEVEL:	< 1.0 EU per 1 µg of protein	
FORMULATION:	Lyophilized from a PBS solution.	
RECONSTITUTION:	Reconstitute in sterile PBS containing 0.1% endotoxin-free, recombinant human serum albumin.	

STORAGE CONDITIONS:

Aliquot and store at -20°C or -70°C. Avoid repeated freezing and thawing cycles.

ADVANTAGES:

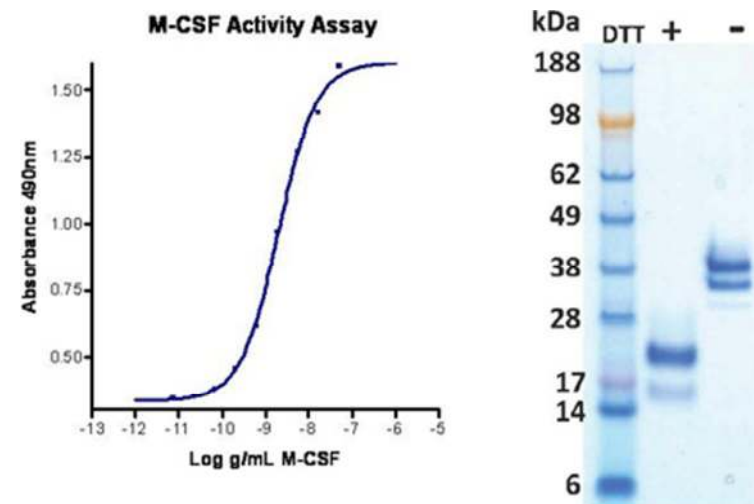
- Animal-derived product free
- High Activity
- Authentic Glycosylation

DESCRIPTION:

Granulocyte/Macrophage Colony-Stimulating Factors are cytokines that act in hematopoiesis by controlling the production, differentiation, and function of 2 related white cell populations of the blood, the granulocytes and the monocytes-macrophages. MCSF induces cells of the monocyte/macrophage lineage. MCSF plays a role in immunological defenses, bone metabolism, lipoproteins clearance, fertility and pregnancy.

BIOLOGICAL ACTIVITY:

ED₅₀ is typically 0.5 to 4 ng/mL. The specific activity was determined by the dose - dependent stimulation of the proliferation of murine M-NFS-60 cells (Mouse Myeloid Leukemia indicator cell line).



RELATED PRODUCTS:

- Human Cell^{exp} Human Recombinant G-CSF (Cat # 6453-10, -50)
- Human Cell^{exp} Human Recombinant GM-CSF (Cat # 6454-10, -50)
- G-CSF, human recombinant (Cat # 4094-10, -50, -1000)
- G-CSF, murine recombinant (Cat # 4095-10, -50, -1000)
- GM-CSF, murine recombinant (Cat # 4101-10, -100, -1000)
- GM-CSF, Rat recombinant (Cat # 4102-10, -100, -1000)
- G-CSF Antibody (Cat # 5094R-100)
- G-CSF Blocking Peptide (Cat # 5094RBP-50)

FOR RESEARCH USE ONLY! Not to be used in humans.