

Bacterial Recombinant MDH

CATALOG #:	6357-100	100 µg
ALTERNATE NAMES:	Malate dehydrogenase, ECK3225, JW3205.	
SOURCE:	E.Coli	
PURITY:	> 95% by SDS - PAGE	
MOL. WEIGHT:	34.9 kDa (336 aa, 1-312 aa + NT His Tag)	
FORMULATION:	1 mg/ml solution in 20 mM Tris-HCl (pH 8.0) containing 1 mM DTT, 50 mM NaCl and 10% glycerol.	

STORAGE CONDITIONS:

Can be stored at 4°C short term (1-2 weeks). For long term storage, aliquot and store at -20°C or -70°C. Avoid repeated freezing and thawing cycles.

DESCRIPTION:

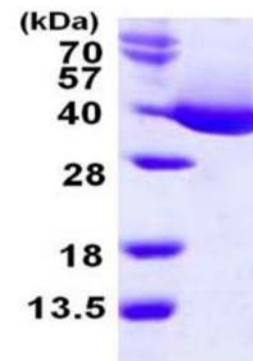
Malate dehydrogenase (MDH) belongs to the LDH/MDH superfamily and MDH type 1 family. This enzyme catalyzes the conversion of malate into oxaloacetate (using NAD⁺) and vice versa (reversible reaction). This reaction is part of many metabolic pathways, including the citric acid cycle. Malate dehydrogenase is also involved in gluconeogenesis, the synthesis of glucose from smaller molecules.

AMINO ACID SEQUENCE:

MGSSHHHHHH SSGLVPRGSH MGSHMKVAVL GAAGGIGQAL ALLLKTQLPS
 GSELSLYDIA PVTPGVAVDL SHIPTAVKIK GFSGEDATPA LEGADVVLIS AGVARKPGMD
 RSDLFNVNAG IVKNLVQQVA KTCPKACIGI ITNPVNNTTVA IAAEVLKKAG VYDKNKLFVG
 TTLDIIRSNT FVAELKGKQP GEVEVPVIGG HSGVTILPLL SQVPGVSFTE QEVADLTKRI
 QNAGTEVVEA KAGGGSATLS MGQAAARFGL SLVRALQGEQ GVVECAVEG
 DGQYARFFSQ PLLLGKNGVE ERKSIGTLSA FEQNALEGML DTLKKDIALG EEFVNK

BIOLOGICAL ACTIVITY:

Specific activity is > 450 units/mg, and is defined as the amount of enzyme that cleaves 1 µmole of oxaloacetate and beta-NADH to L-malate and beta-NAD per minute at pH 7.5 at 25°C



15% SDS-PAGE (3ug)

Bacterial Recombinant MDH

RELATED PRODUCTS:

- Malate assay kit (Cat. No. K637-100)
- Human recombinant MDH1 (Cat. No. 6355-100)
- Human recombinant MDH2 (Cat. No. 6356-50)

FOR RESEARCH USE ONLY! Not to be used in humans.