

## Human Recombinant Cyclophilin H

<b>CATALOG #:</b>	6313-100	100 µg
<b>ALTERNATE NAMES:</b>	Peptidylprolyl isomerase H, CYPH, CYP20, SnuCyp-20, PPlase H, Rotamase H.	
<b>SOURCE:</b>	E.Coli	
<b>PURITY:</b>	> 95% by SDS - PAGE	
<b>MOL. WEIGHT:</b>	19.2 kDa (177 aa – 1-177 aa).	
<b>ENDOTOXIN LEVEL:</b>	< 1.0 EU per 1 µg of protein (determined by LAL method)	
<b>FORMULATION:</b>	1 mg/ml solution in PBS (pH 7.4) containing 10% glycerol.	

### STORAGE CONDITIONS:

Can be stored at 4°C short term (1-2 weeks). For long term storage, aliquot and store at -20°C or -70°C. Avoid repeated freezing and thawing cycles.

### DESCRIPTION:

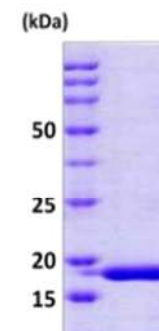
Cyclophilin H is a member of peptidyl-propyl cis-trans isomerase (PPlase) family, which catalyzes the cis-trans isomerization of proline imidic peptide bonds in oligopeptides and accelerates the folding of proteins. The cyclophilin H is a specific component of the human U4/U6 small nuclear ribonucleoprotein particle involved in the nuclear splicing of pre-mRNA. It stably associates with the U4/U6-60kD and -90kD proteins, the human orthologues of the *Saccharomyces cerevisiae* Prp4 and Prp3 splicing factors.

### AMINO ACID SEQUENCE:

MAVANSSPVN PVVFFDVSIG GQEVGRMKIE LFADVVPKTA ENFRQFCTGE FRKDGVPIGY  
KGSTFHRVIK DFMIQGGDFV NGDGTGVASI YRGPFADENF KLRHSAPGLL SMANSGPSTN  
GCQFFITCSK CDWLDGKHVV FGKIIDGLLV MRKIENVPTG PNNKPPLPVV ISQCGEM

### BIOLOGICAL ACTIVITY:

Specific activity is > 220 nmoles/min/mg, and is defined as the amount of enzyme that cleaves 1 µmole of Suc-AAFP-pNA per minute at 25°C in Tris HCl pH 8.0 using chymotrypsin.



15% SDS-PAGE (3µg)

Human Recombinant Cyclophilin H

### RELATED PRODUCTS:

- Cyclosporine A (**Cat. No. 1522-100, 1G**)
- Human Recombinant Cyclophilin B (**Cat. No. 6310-100**)
- Human Recombinant Cyclophilin A (**Cat. No. 6311-100**)
- Human Recombinant Cyclophilin D (**Cat. No. 6312-100**)

**FOR RESEARCH USE ONLY! Not to be used in humans.**