

Instructions For Use KT 038-IFU

Rev. Date: April 23, 2012

Revision: 1

Page 1 of 2

1020 Serpentine Lane, #114, Pleasanton, CA 94566 U.S.A. - Tel. (925) 484-3350 - Fax (925) 484-3390 - www.dbiosys.com

Papanicolaou (PAP) Stain Kit

Description:

The Papanicolaou (PAP) Stain Kit is designed to differentiate between a variety of cells in vaginal smears for detection of vaginal, uterine and cervical cancer. In addition, this procedure is valuable for staining a variety of other bodily secretions and cell smears. The procedure was developed in the early 1940's by George Papanicolaou.

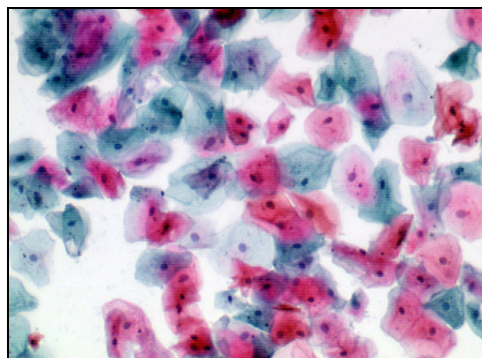
Nuclei:	Blue
High Keratin Cells:	Orange
Superficial Cells:	Pink
Erythrocytes:	Dark Pink
Parabasal Cells:	Blue/Green
Intermediate Cells:	Blue/Green
Metaplastic Cells:	May contain both Blue/Green and Pink.

Uses/Limitations:

Not to be taken internally.
For In-Vitro Diagnostic use only.
Histological applications.
Do not use if reagents become cloudy.
Do not use past expiration date.
Use caution when handling reagents.
Non-Sterile.

Control Tissue:


Gynecological Smear.
Any Superficial Cell Smear.


Kit Contents:


<u>Components</u>	<u>Volume</u>	<u>Storage</u>
Modified Mayer's Hematoxylin	500 ml	15-30 °C
OG-6 Solution	500 ml	15-30 °C
EA-50 Stain Solution	500 ml	15-30 °C

Precautions:

Avoid contact with skin and eyes.
Harmful if swallowed.
Flammable.
Keep away from sources of ignition.
Follow all Federal, State, and local regulations regarding disposal.

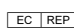
Storage: 15° C  30° C

**Store All Components At
Room Temperature.**



Diagnostic BioSystems, Inc.
1020 Serpentine Lane, Suite 114
Pleasanton, CA 94566
U.S.A.

CE 

 EmergoEurope (31)(0) 70 345-8570
Molsstraat 15
2513 BH Hague, The Netherlands

Instructions For Use KT 038-IFU

Rev. Date: April 23, 2012

Revision: 1

Page 2 of 2


1020 Serpentine Lane, #114, Pleasanton, CA 94566 U.S.A. - Tel. (925) 484-3350 - Fax (925) 484-3390 - www.dbiosys.com

Procedure:


1. Place slide in 95% alcohol for 5 minutes.
2. Place slide in 70% alcohol for 5 minutes.
3. Place slide in distilled water for 2 minutes.
4. Apply adequate Modified Mayer's Hematoxylin to completely cover cell smear and incubate for 5 minutes.
5. Rinse slide 1 time in distilled water to remove excess stain.
6. Rinse slide in tap water for 2 minutes..
7. Rinse slide in 2 changes of distilled water.
8. Dip slide several times in 95% alcohol and blot excess off.
9. Apply adequate OG-6 Stain Solution to completely cover cell smear to excess and incubate for 2 minutes.
10. Rinse slide gently using absolute alcohol.
11. Apply adequate EA-50 Stain Solution to completely cover cell smear to excess and incubate for 3 minutes.
12. Rinse slide gently using absolute alcohol.
13. Quickly dehydrate slide in 3 changes of absolute alcohol.
14. Clear slide and mount in synthetic resin.

References:

1. Papanicolaou, G.N. Atlas of Exfoliative Cytology, Harvard University Press, Cambridge, 1954.

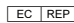
Storage: 15° C  30° C

**Store All Components At
Room Temperature.**



Diagnostic BioSystems, Inc.
1020 Serpentine Lane, Suite 114
Pleasanton, CA 94566
U.S.A.



 EmergoEurope (31)(0) 70 345-8570
Molsstraat 15
2513 BH Hague, The Netherlands