

NB100-554**UBE2A Antibody****Unit Size**

0.1 ml

Concentration

1.0 mg/ml

Storage

Store at 4°C. Do not freeze.

Applications

WB

Species

Human

Host

Rabbit

Clonality

Polyclonal

Purity

Immunogen affinity purified

Preservative

0.09% Sodium Azide

Specificity/Sensitivity

NB100-554 is specific for human Rad6 protein.

Immunogen

A synthetic peptide which maps to a region between residues 10 and 50 of human ubiquitin-conjugating enzyme E2A using the numbering given in Swiss-Prot entry P49459 (GeneID 7319).

Recommended Dilutions

Western Blot 1:5000 - 1:25000

Buffer

Tris-citrate/phosphate buffer, pH 7 to 8

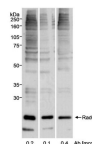
Uses

Optimal working dilutions should be determined experimentally by the investigator. Prepare working dilution immediately before use. Suggested starting dilutions are as follows.

Western Blot: 1:5,000 - 1:25,000 Immunoprecipitation: not tested Histo/Cytochemistry: not tested *In some cases, the antibody may be diluted further than indicated.

Images

Western Blot: UBE2A Antibody [NB100-554] - Whole cell lysate (50 ug) from 293T cells. Antibody used at the indicated concentrations.



Updated 3/9/2013 2.0

Limitations: This product is for research use only and is not approved for use in humans or in clinical diagnosis. Products are guaranteed for six months from the date of receipt except for peptides and proteins which are guaranteed for 3 months. **For more information on our guarantee, please visit www.novusbio.com/guarantee.**

Novus USA

8100 Southpark Way, A-8
 Littleton, CO 80120
 p) 888-506-6887
 p) 303-730-1950
 f) 303-730-1966
novus@novusbio.com

Novus Canada

461 North Service Road West,
 Unit B37
 Oakville, ON L6M 2V5
 p) 855-668-8722
 f) 905-827-6402
canada@novusbio.com

Novus Europe

12 Cambridge Science Park
 Cambridge, UK CB4 0FQ
 UK: p) +44-1223-426-001, f) +44-871-971-1635
 DE: p) +49-6922-22340-60, f) +49-0800-58926-79
 IT: p) +39-02-4032-6786, f) +39-02-4032-6340
 FR: p) +33-1-76-77-45-30, f) +33-1-76-77-45-31
europe@novusbio.com

