

NB100-56588**TLR7 Antibody****Unit Size**

0.05 mg

Concentration

0.5 mg/ml

Storage

Store at 4C short term. Aliquot and store at -20C long term. Avoid freeze-thaw cycles.

Applications

FLOW, IHC, IHC-Fr

Species

Human, Mouse

Host

Rabbit

Clonality

Polyclonal

Purity

Protein G purified

Preservative

0.05% Sodium Azide

Immunogen

This antibody was developed against KLH-conjugated synthetic peptide corresponding to a portion of amino acids 684-701 of human TLR7 (NP_057646).

Recommended DilutionsFlow Cytometry 0.5-2 ug/10⁶ cells in 100 ul

Immunohistochemistry

Immunohistochemistry-Frozen 1:20

Buffer

PBS containing 0.05% BSA

Uses

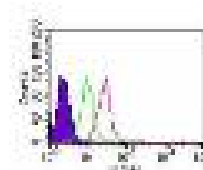
Antibody is useful in Flow Cytometry for both intracellular and cell surface staining.

References (more available at www.novusbio.com/NB100-56588)

Cohen P, Koski G, Czerniecki B, Bunting K, Fu X, Wang Z, Zhang W, Carter C, Awad M, Distel C, Nagem H, Paustian C, Johnson T, Tisdale J, Shu S. STAT3 and STAT5-dependent pathways competitively regulate the pan-differentiation of DC34pos cells into tumor-competent dendritic cells. Immunobiology 112: 1832-1843. 2008. [PMID: 18577706]

Images

Flow Cytometry: TLR7 Antibody [NB100-56588] - Intracellular flow analysis of TLR7 in 10⁶ ThP1 cells using 2 ug of NB100-56588. Shaded histogram represents cells without antibody; green represents isotype control; red represents TLR7 antio... See more at www.novusbio.com/NB100-56588



Updated 3/9/2013 2.0

Limitations: This product is for research use only and is not approved for use in humans or in clinical diagnosis. Products are guaranteed for six months from the date of receipt except for peptides and proteins which are guaranteed for 3 months. **For more information on our guarantee, please visit www.novusbio.com/guarantee.**

Novus USA

8100 Southpark Way, A-8
 Littleton, CO 80120
 p) 888-506-6887
 p) 303-730-1950
 f) 303-730-1966
novus@novusbio.com

Novus Canada

461 North Service Road West,
 Unit B37
 Oakville, ON L6M 2V5
 p) 855-668-8722
 f) 905-827-6402
canada@novusbio.com

Novus Europe

12 Cambridge Science Park
 Cambridge, UK CB4 0FQ
 UK: p) +44-1223-426-001, f) +44-871-971-1635
 DE: p) +49-6922-22340-60, f) +49-0800-58926-79
 IT: p) +39-02-4032-6786, f) +39-02-4032-6340
 FR: p) +33-1-76-77-45-30, f) +33-1-76-77-45-31
europe@novusbio.com

