

**NB100-56563****TLR1 Antibody****Unit Size**

0.1 mg

**Concentration**

0.5 mg/ml

**Storage**

Store at 4°C short term. Aliquot and store at -20°C long term. Avoid freeze-thaw cycles.

**Applications**

WB, FLOW

**Species**

Human, Mouse, Rat

**Host**

Rabbit

**Clonality**

Polyclonal

**Purity**

Protein G purified

**Preservative**

0.05% Sodium Azide

**Specificity/Sensitivity**

In Ramos, an 87 kDa band is observed.

**Immunogen**

This antibody was developed against a KLH-conjugated synthetic peptide corresponding to a sequence within amino acids 400-450 of human TLR1.

**Recommended Dilutions**Flow Cytometry 2-4 ug/ 1x10<sup>6</sup> cells, Western Blot 1-3 ug/ml**Buffer**

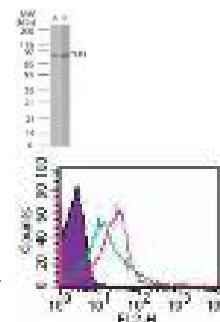
PBS containing 0.5% gelatin

**Uses**Western Blot 1-3 ug/ml and Flow cytometry/both cell surface and intracellular 0.5-1 ug/10<sup>6</sup> cells.**References** (more available at [www.novusbio.com/NB100-56563](http://www.novusbio.com/NB100-56563))

Palladino MA., TA Johnson, R Gupta, JL Chapman, and P Ojha. Members of the Toll-like Receptor Family of Innate Immunity Pattern-Recognition Receptors Are Abundant in the Male Rat Reproductive Tract. Biol Reproduction., in press, DOI: 10.1095/biolreprod.106.059410. 2007. [PMID: 17314314]

**Images** (more available at [www.novusbio.com/NB100-56563](http://www.novusbio.com/NB100-56563))

Western Blot: TLR1 Antibody [NB100-56563] - Western blot analysis of TLR1 in Ramos (A) and Raw (B) whole cell lysate using NB100-56563 at 2 ug/ml.



Flow cytometry / FACS analysis: TLR1 Antibody [NB100-56563] - Cell surface flow cytometric analysis of TLR1 in human PBMCs (monocyte-gated) at 0.5 ug/10<sup>6</sup> cells. Shaded histogram represents cells without antibody, green represents isotype c... See more at [www.novusbio.com/NB100-56563](http://www.novusbio.com/NB100-56563)

Updated 3/9/2013 2.0

**Limitations:** This product is for research use only and is not approved for use in humans or in clinical diagnosis. Products are guaranteed for six months from the date of receipt except for peptides and proteins which are guaranteed for 3 months. **For more information on our guarantee, please visit [www.novusbio.com/guarantee](http://www.novusbio.com/guarantee).**

**Novus USA**

8100 Southpark Way, A-8  
 Littleton, CO 80120  
 p) 888-506-6887  
 p) 303-730-1950  
 f) 303-730-1966  
[novus@novusbio.com](mailto:novus@novusbio.com)

**Novus Canada**

461 North Service Road West,  
 Unit B37  
 Oakville, ON L6M 2V5  
 p) 855-668-8722  
 f) 905-827-6402  
[canada@novusbio.com](mailto:canada@novusbio.com)

**Novus Europe**

12 Cambridge Science Park  
 Cambridge, UK CB4 0FQ  
 UK: p) +44-1223-426-001, f) +44-871-971-1635  
 DE: p) +49-6922-22340-60, f) +49-0800-58926-79  
 IT: p) +39-02-4032-6786, f) +39-02-4032-6340  
 FR: p) +33-1-76-77-45-30, f) +33-1-76-77-45-31  
[europe@novusbio.com](mailto:europe@novusbio.com)

