

NB100-74636**NuMA Antibody****Unit Size**

0.1 ml

Concentration

0.2 mg/ml

Storage

Store at 4°C. Do not freeze.

Applications

WB, ICC/IF, IP

Species

Human

Molecular Weight

238.26kDa

Host

Rabbit

Clonality

Polyclonal

Purity

Immunogen affinity purified

Preservative

0.09% Sodium Azide

Immunogen

The immunogen recognized by this antibody maps to a region between residue 900 and 950 of human nuclear mitotic apparatus protein 1 (NP_006176.2).

Recommended Dilutions

Immunocytochemistry/Immunofluorescence 1:400

Immunoprecipitation 2-5 ug/mg lysate

Western Blot 1:2000 - 1:10000

Buffer

Tris-buffered Saline and 0.1% BSA

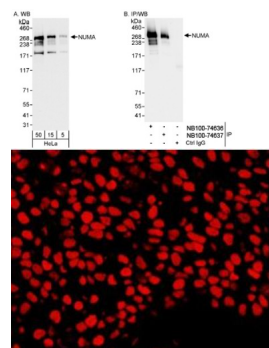
Uses

This antibody is useful for western blot, immunoprecipitation and Immunofluorescence.

Images

Western Blot: NuMA Antibody [NB100-74636] - Detection of Human NUMA on HeLa whole cell lysate using NB100-74636. NUMA was also immunoprecipitated by rabbit anti-NUMA antibody NB100-74637.

Immunocytochemistry/Immunofluorescence: NuMA Antibody [NB100-74636] - Detection of Human NUMA by Immunofluorescence. Sample: FFPE section of human breast carcinoma. Antibody: Affinity purified rabbit anti-NUMA (NB100-74636) used at a diluti... See more at www.novusbio.com/NB100-74636



Updated 3/9/2013 2.0

Limitations: This product is for research use only and is not approved for use in humans or in clinical diagnosis. Products are guaranteed for six months from the date of receipt except for peptides and proteins which are guaranteed for 3 months. **For more information on our guarantee, please visit www.novusbio.com/guarantee.**

Novus USA

8100 Southpark Way, A-8
 Littleton, CO 80120
 p) 888-506-6887
 p) 303-730-1950
 f) 303-730-1966
novus@novusbio.com

Novus Canada

461 North Service Road West,
 Unit B37
 Oakville, ON L6M 2V5
 p) 855-668-8722
 f) 905-827-6402
canada@novusbio.com

Novus Europe

12 Cambridge Science Park
 Cambridge, UK CB4 0FQ
 UK: p) +44-1223-426-001, f) +44-871-971-1635
 DE: p) +49-6922-22340-60, f) +49-0800-58926-79
 IT: p) +39-02-4032-6786, f) +39-02-4032-6340
 FR: p) +33-1-76-77-45-30, f) +33-1-76-77-45-31
europe@novusbio.com

