

NB110-60973**VEGFD Antibody (MM0007-7E79)****Unit Size**

0.1 mg

Concentration

Lyophil

Storage

Aliquot and store at -20C or -80C. Avoid freeze-thaw cycles.

Applications

WB, IHC, IHC-P

Species

Human

Host

Mouse

Clonality

Monoclonal

Isotype

IgG2

Purity

Protein G purified

Preservative

No Preservative

Specificity/Sensitivity

VEGFD (MM0007-7E79). No cross-reactivity is shown with VEGF and VEGF-B.

Immunogen

This antibody was produced from a hybridoma (mouse myeloma fused with spleen cells from a mouse immunized with human VEGF-D recombinant protein).

Recommended Dilutions

Western Blot 1:500-1:1000, Immunohistochemistry-Paraffin 1:200-1:500, Immunohistochemistry

Buffer

Lyophilized - Reconstitute the antibody with 500 ul sterile PBS and the final concentration is 200ug/ml.

Uses

No cross-reactivity is shown with VEGF and VEGF-B.

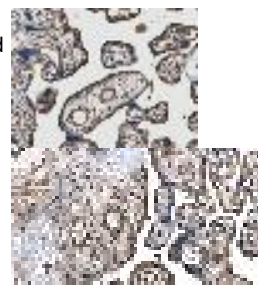
References

Schimanski CC, Schlaegel F, Jordan M et al VEGF-D correlates with metastatic disease in gastric cancer patients undergoing surgery World J Surg 2011 May [PMID: 21387130] (IHC, Human)

Images

Immunohistochemistry-Paraffin: VEGFD Antibody (MM0007-7E79) [NB110-60973] - Formalin fixed and Paraffin embedded human placenta tissue section was subjected to IHC staining (Proteinase K pretreatment is required).

Formalin fixed and Paraffin embedded human placenta tissue section was subjected to IHC staining using NB110-60973 (Proteinase K pretreatment is required).



Updated 3/9/2013 2.0

Limitations: This product is for research use only and is not approved for use in humans or in clinical diagnosis. Products are guaranteed for six months from the date of receipt except for peptides and proteins which are guaranteed for 3 months. **For more information on our guarantee, please visit www.novusbio.com/guarantee.**

Novus USA
 8100 Southpark Way, A-8
 Littleton, CO 80120
 p) 888-506-6887
 p) 303-730-1950
 f) 303-730-1966
novus@novusbio.com
Novus Canada
 461 North Service Road West,
 Unit B37
 Oakville, ON L6M 2V5
 p) 855-668-8722
 f) 905-827-6402
canada@novusbio.com
Novus Europe
 12 Cambridge Science Park
 Cambridge, UK CB4 0FQ
 UK: p) +44-1223-426-001, f) +44-871-971-1635
 DE: p) +49-6922-22340-60, f) +49-0800-58926-79
 IT: p) +39-02-4032-6786, f) +39-02-4032-6340
 FR: p) +33-1-76-77-45-30, f) +33-1-76-77-45-31
europe@novusbio.com
