

**NB300-235****Synaptotagmin 1 [p Thr202] Antibody****Unit Size**

0.1 ml

**Concentration**

Please see the vial label for concentration.

**Storage**

Store at -20C. Avoid freeze-thaw cycles.

**Applications**

WB, IHC, IHC-P

**Species**

Rat

**Host**

Rabbit

**Clonality**

Polyclonal

**Purity**

Affinity purified

**Preservative**

No Preservative

**Specificity/Sensitivity**

Specific for the ~60k - 62k synaptotagmin protein phosphorylated at Thr202. The immunolabeling is completely eliminated by lambda-phosphatase treatment

**Immunogen**

Synthetic phospho-peptide corresponding to amino acid residues surrounding Thr202 conjugated to KLH

**Recommended Dilutions**

Western Blot 1:1000, Immunohistochemistry-Paraffin, Immunohistochemistry

**Buffer**

10 mM HEPES [pH 7.5] contains 150 mM NaCl, 0.1 mg/ml BSA and 50% glycerol

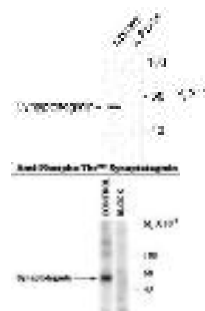
**Uses**

This antibody is useful for Immunohistochemistry-Paraffin and Western Blot 1:1,000. The investigator should determine the optimal working dilution for a specific application.

**Images**

Western Blot: Synaptotagmin 1 [Thr202] Antibody [NB300-235] - Western blot of rat cortex lysate showing specific immunolabeling of the ~60k - ~62k synaptotagmin phosphorylated at Thr202 (Control). The phosphospecificity of this labeling is s... See more at [www.novusbio.com/NB300-235](http://www.novusbio.com/NB300-235)

Western Blot: Synaptotagmin Phosphospecific Antibody [NB300-235] - Western blot of 10 ug of rat brain lysate showing specific immunolabeling of synaptotagmin phosphorylated at Thr202. The labeling by the antibody was specifically blocked by ... See more at [www.novusbio.com/NB300-235](http://www.novusbio.com/NB300-235)



Updated 3/9/2013 2.0

**Limitations:** This product is for research use only and is not approved for use in humans or in clinical diagnosis. Products are guaranteed for six months from the date of receipt except for peptides and proteins which are guaranteed for 3 months. **For more information on our guarantee, please visit [www.novusbio.com/guarantee](http://www.novusbio.com/guarantee).**

**Novus USA**

8100 Southpark Way, A-8  
 Littleton, CO 80120  
 p) 888-506-6887  
 p) 303-730-1950  
 f) 303-730-1966  
[novus@novusbio.com](mailto:novus@novusbio.com)

**Novus Canada**

461 North Service Road West,  
 Unit B37  
 Oakville, ON L6M 2V5  
 p) 855-668-8722  
 f) 905-827-6402  
[canada@novusbio.com](mailto:canada@novusbio.com)

**Novus Europe**

12 Cambridge Science Park  
 Cambridge, UK CB4 0FQ  
 UK: p) +44-1223-426-001, f) +44-871-971-1635  
 DE: p) +49-6922-22340-60, f) +49-0800-58926-79  
 IT: p) +39-02-4032-6786, f) +39-02-4032-6340  
 FR: p) +33-1-76-77-45-30, f) +33-1-76-77-45-31  
[europe@novusbio.com](mailto:europe@novusbio.com)

