

**NB600-492****SH3BP2 [p Ser427] Antibody****Unit Size**

0.1 mg

**Concentration**

Lyoph

**Storage**

Aliquot and store at -20C or -80C. Avoid freeze-thaw cycles.

**Applications**

WB, ELISA, IP

**Species**

Human, Mouse, Rat

**Host**

Rabbit

**Clonality**

Polyclonal

**Purity**

Immunogen affinity purified

**Preservative**

0.01% Sodium Azide

**Specificity/Sensitivity**

SH3BP2

**Immunogen**

Synthetic phospho peptide: SFRSFSpFEKPRQ, corresponding to amino acids 422-433 of Human SH3BP2.

**Recommended Dilutions**

ELISA 1:2000 - 1:10000, Immunoprecipitation 1:100, Western Blot 1:500 - 1:2000

**Buffer**

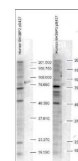
This product is lyophilized and contains PBS and 2% Sucrose. Add 50 ul of distilled water. Final antibody concentration is 1 mg/ml.

**Uses**

Expect a band approximately 60 kDa in size corresponding - SH3BP2 by western blotting in the appropriate cell lysate or extract.

**Images**

Western Blot: SH3BP2 [p Ser427] Antibody [NB600-492] - Antibody in unstimulated human whole cell lysates). The band as indicated by the arrowheads is evident in both M059 cells (panel A) and PC-3 cells (panel B). Comparison to a molecular weight marker is shown. See more at [www.novusbio.com/NB600-492](http://www.novusbio.com/NB600-492)



Updated 3/9/2013 2.0

**Limitations:** This product is for research use only and is not approved for use in humans or in clinical diagnosis. Products are guaranteed for six months from the date of receipt except for peptides and proteins which are guaranteed for 3 months. **For more information on our guarantee, please visit [www.novusbio.com/guarantee](http://www.novusbio.com/guarantee).**

**Novus USA**

8100 Southpark Way, A-8  
 Littleton, CO 80120  
 p) 888-506-6887  
 p) 303-730-1950  
 f) 303-730-1966  
[novus@novusbio.com](mailto:novus@novusbio.com)

**Novus Canada**

461 North Service Road West,  
 Unit B37  
 Oakville, ON L6M 2V5  
 p) 855-668-8722  
 f) 905-827-6402  
[canada@novusbio.com](mailto:canada@novusbio.com)

**Novus Europe**

12 Cambridge Science Park  
 Cambridge, UK CB4 0FQ  
 UK: p) +44-1223-426-001, f) +44-871-971-1635  
 DE: p) +49-6922-22340-60, f) +49-0800-58926-79  
 IT: p) +39-02-4032-6786, f) +39-02-4032-6340  
 FR: p) +33-1-76-77-45-30, f) +33-1-76-77-45-31  
[europe@novusbio.com](mailto:europe@novusbio.com)

