

NBP1-03414**SNAP25 Interacting Protein Antibody****Unit Size**

0.1 ml

Concentration

lyoph

Storage

Store at 4C short term. Aliquot and store at -20C long term. Avoid freeze-thaw cycles.

Applications

WB, IHC, IHC-Fr, IHC-P

Species

Human, Mouse, Rat

Host

Rabbit

Clonality

Polyclonal

Purity

Whole antisera

Preservative

No Preservative

Specificity/Sensitivity

SNIP.

Immunogen

A synthetic peptide from the n-terminal of human SNIP (SNAP 25 interacting protein) conjugated to an immunogenic carrier protein was used as the immunogen. The immunogen is homologous in rat and mouse.

Recommended Dilutions

Immunohistochemistry-Paraffin, Western Blot 1:300-1:2000, Immunohistochemistry-Frozen, Immunohistochemistry

Buffer

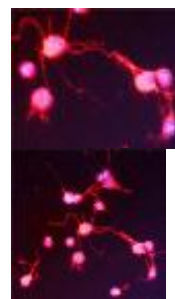
Lyophilized Reconstitute in 0.1 ml of sterile water. Centrifuge to remove any insoluble material. When reconstituting, glycerol (1:1) may be added for an additional stability.

Uses

Immunohistochemistry-Paraffin/Frozen and Western Blot

Images

Immunofluorescent: SNIP Antibody [NBP1-03414] - IF on 1 day- old mouse cortical cell culture using Rabbit antibody to n-terminal of SNIP (SNAP 25 interacting protein): whole serum (NBP1-03414) at 1: 2000 dilution. DAPI counter stained.

Immunofluorescence: SNAP25 Interacting Protein Antibody [NBP1-03414] - IF on 1 day- old mouse cortical cell culture using Rabbit antibody to n-terminal of SNIP (SNAP 25 interacting protein): whole serum at 1: 2000 dilution. DAPI counter stai... See more at www.novusbio.com/NBP1-03414

Updated 3/9/2013 2.0

Limitations: This product is for research use only and is not approved for use in humans or in clinical diagnosis. Products are guaranteed for six months from the date of receipt except for peptides and proteins which are guaranteed for 3 months. **For more information on our guarantee, please visit www.novusbio.com/guarantee.**

Novus USA
 8100 Southpark Way, A-8
 Littleton, CO 80120
 p) 888-506-6887
 p) 303-730-1950
 f) 303-730-1966
novus@novusbio.com
Novus Canada
 461 North Service Road West,
 Unit B37
 Oakville, ON L6M 2V5
 p) 855-668-8722
 f) 905-827-6402
canada@novusbio.com
Novus Europe
 12 Cambridge Science Park
 Cambridge, UK CB4 0FQ
 UK: p) +44-1223-426-001, f) +44-871-971-1635
 DE: p) +49-6922-22340-60, f) +49-0800-58926-79
 IT: p) +39-02-4032-6786, f) +39-02-4032-6340
 FR: p) +33-1-76-77-45-30, f) +33-1-76-77-45-31
europe@novusbio.com
