

**NBP1-55228****SLC38A4 Antibody****Unit Size**

0.1 mg

**Concentration**

lyoph

**Storage**

Store at -20C. Avoid freeze-thaw cycles.

**Applications**

WB, IHC, IHC-P

**Species**

Human, Mouse, Rat, Canine, C. elegans, Drosophila, Zebrafish

**Host**

Rabbit

**Clonality**

Polyclonal

**Purity**

IgG purified

**Preservative**

No Preservative

**Immunogen**

Synthetic peptides corresponding to SLC38A4(solute carrier family 38, member 4) The peptide sequence was selected from the middle region of SLC38A4. Peptide sequence LAALFGYLTIFYGEVEDELLHAYSKVYTLDIPLLMVRLAVLVAVTLTVPIV.

**Recommended Dilutions**

Immunohistochemistry, Immunohistochemistry-Paraffin, Western Blot

**Buffer**

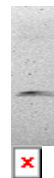
PBS & 2% Sucrose lyophilized with the antibody. Centrifuge the vial of lyoph antibody at 12,000 x g for 20 seconds. Add 100ul of distilled water. Vortex followed by centrifuge again to pellet the solution. Final concentration is 1 mg/ml in PBS buffer

**Uses**

This is a rabbit polyclonal antibody against SLC38A4 and was validated on Western Blot and immunohistochemistry-P

**Images (more available at [www.novusbio.com/NBP1-55228](http://www.novusbio.com/NBP1-55228))**

Western Blot: SLC38A4 Antibody [NBP1-55228] -  
 WB analysis of SLC38A4 in Hep3B WCL.



Immunohistochemistry-Paraffin: SLC38A4 Antibody [NBP1-55228] - Human kidney Tissue, antibody concentration 4-8ug/ml. Cells with positive label: renal corpuscle cells (indicated with arrows) 400X magnification.



Updated 3/9/2013 2.0

**Limitations:** This product is for research use only and is not approved for use in humans or in clinical diagnosis. Products are guaranteed for six months from the date of receipt except for peptides and proteins which are guaranteed for 3 months. **For more information on our guarantee, please visit [www.novusbio.com/guarantee](http://www.novusbio.com/guarantee).**

**Novus USA**

8100 Southpark Way, A-8  
 Littleton, CO 80120  
 p) 888-506-6887  
 p) 303-730-1950  
 f) 303-730-1966  
[novus@novusbio.com](mailto:novus@novusbio.com)

**Novus Canada**

461 North Service Road West,  
 Unit B37  
 Oakville, ON L6M 2V5  
 p) 855-668-8722  
 f) 905-827-6402  
[canada@novusbio.com](mailto:canada@novusbio.com)

**Novus Europe**

12 Cambridge Science Park  
 Cambridge, UK CB4 0FQ  
 UK: p) +44-1223-426-001, f) +44-871-971-1635  
 DE: p) +49-6922-22340-60, f) +49-0800-58926-79  
 IT: p) +39-02-4032-6786, f) +39-02-4032-6340  
 FR: p) +33-1-76-77-45-30, f) +33-1-76-77-45-31  
[europe@novusbio.com](mailto:europe@novusbio.com)

