

NBP1-77202**TLR11 Antibody****Unit Size**

0.1 mg

Concentration

1 mg/ml

Storage

Store at 4°C short term. Aliquot and store at -20°C long term. Avoid freeze-thaw cycles.

Applications

WB, ELISA, ICC/IF

Species

Mouse

Host

Rabbit

Clonality

Polyclonal

Purity

Ion exchange chromatography

Preservative

0.02% Sodium Azide

Immunogen

Antibody was raised against a peptide corresponding to 16 amino acids between the middle and carboxy terminus of mouse TLR11.

Recommended Dilutions

ELISA, Immunocytochemistry/Immunofluorescence, Western Blot

Buffer

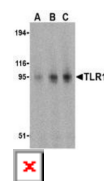
PBS containing 0.02% sodium azide.

Uses

TLR11 antibody polyclonal antibody can be used for detection of TLR11 by Western blot at 0.5 to 2 mg/ml.

Images

Western Blot: TLR11 Antibody [NBP1-77202] - RAW264.7 cell lysates with TLR11 antibody at (A) 0.5, (B) 1, and (C) 2 ug/ml.



Immunocytochemistry/Immunofluorescence: TLR11 Antibody [NBP1-77202] - RAW264.7 cells with TLR11 antibody at 10 ug/ml

Updated 3/9/2013 2.0

Limitations: This product is for research use only and is not approved for use in humans or in clinical diagnosis. Products are guaranteed for six months from the date of receipt except for peptides and proteins which are guaranteed for 3 months. **For more information on our guarantee, please visit www.novusbio.com/guarantee.**

Novus USA
 8100 Southpark Way, A-8
 Littleton, CO 80120
 p) 888-506-6887
 p) 303-730-1950
 f) 303-730-1966
novus@novusbio.com
Novus Canada
 461 North Service Road West,
 Unit B37
 Oakville, ON L6M 2V5
 p) 855-668-8722
 f) 905-827-6402
canada@novusbio.com
Novus Europe
 12 Cambridge Science Park
 Cambridge, UK CB4 0FQ
 UK: p) +44-1223-426-001, f) +44-871-971-1635
 DE: p) +49-6922-22340-60, f) +49-0800-58926-79
 IT: p) +39-02-4032-6786, f) +39-02-4032-6340
 FR: p) +33-1-76-77-45-30, f) +33-1-76-77-45-31
europe@novusbio.com
