

**NBP1-77090****SIPA1L2 Antibody****Unit Size**

0.1 mg

**Concentration**

1 mg/ml

**Storage**

Store at 4C short term. Aliquot and store at -20C long term. Avoid freeze-thaw cycles.

**Applications**

WB, ELISA, IHC, IHC-P

**Species**

Human, Mouse, Rat

**Host**

Rabbit

**Clonality**

Polyclonal

**Purity**

Affinity purified

**Preservative**

0.02% Sodium Azide

**Immunogen**

Antibody was raised against a 19 amino acid peptide from near the amino terminus of human SIPA1L2

**Recommended Dilutions**

ELISA, Immunohistochemistry, Immunohistochemistry-Paraffin, Western Blot

**Buffer**

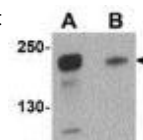
PBS containing 0.02% sodium azide.

**Uses**

SIPA1L2 antibody can be used for detection of SIPA1L2 by Western blot at 0.5 - 1 mg/ml.

**Images**

Western Blot: SIPA1L2 Antibody [NBP1-77090] - Rat brain tissue lysate with SIPA1L2 antibody at 1 ug/ml in (A) the absence and (B) the presence of blocking peptide.



Immunohistochemistry-Paraffin: SIPA1L2 Antibody [NBP1-77090] - Human brain tissue with SIPA1L2 antibody at 5 ug/ml.



Updated 3/9/2013 2.0

**Limitations:** This product is for research use only and is not approved for use in humans or in clinical diagnosis. Products are guaranteed for six months from the date of receipt except for peptides and proteins which are guaranteed for 3 months. **For more information on our guarantee, please visit [www.novusbio.com/guarantee](http://www.novusbio.com/guarantee).**

**Novus USA**

8100 Southpark Way, A-8  
 Littleton, CO 80120  
 p) 888-506-6887  
 p) 303-730-1950  
 f) 303-730-1966  
[novus@novusbio.com](mailto:novus@novusbio.com)

**Novus Canada**

461 North Service Road West,  
 Unit B37  
 Oakville, ON L6M 2V5  
 p) 855-668-8722  
 f) 905-827-6402  
[canada@novusbio.com](mailto:canada@novusbio.com)

**Novus Europe**

12 Cambridge Science Park  
 Cambridge, UK CB4 0FQ  
 UK: p) +44-1223-426-001, f) +44-871-971-1635  
 DE: p) +49-6922-22340-60, f) +49-0800-58926-79  
 IT: p) +39-02-4032-6786, f) +39-02-4032-6340  
 FR: p) +33-1-76-77-45-30, f) +33-1-76-77-45-31  
[europe@novusbio.com](mailto:europe@novusbio.com)

