

NBP1-78983**UBCH6 Antibody****Unit Size**

0.1 ml

Concentration

1.02 mg/ml

Storage

Store at 4C short term. Aliquot and store at -20C long term. Avoid freeze-thaw cycles.

Applications

ICC/IF, IHC, IHC-P, WB (-)

Species

Human, Mouse

Host

Rabbit

Clonality

Polyclonal

Purity

Affinity purified

Preservative

0.05% Sodium Azide

Immunogen

A synthetic peptide made to an N-terminal portion of the human UBCH6 protein (between residues 1-50) [UniProt P51965]

Recommended Dilutions

Immunohistochemistry-Paraffin 1:600, Western Blot (-), Immunocytochemistry/Immunofluorescence 1:100, Immunohistochemistry

Buffer

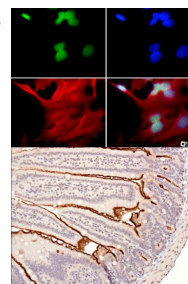
PBS, 30% glycerol

Uses

This UBCH6 antibody is useful for Immunocytochemistry/Immunofluorescence and IHC-paraffin embedded sections. In ICC/IF, nuclear staining was observed in HeLa cells. In IHC-P, staining was observed in the nucleus and plasma membrane of mouse intestine tissue. Prior to immunostaining paraffin tissues, antigen retrieval with sodium citrate buffer (pH 6.0) is recommended. This antibody is not applicab... See more at www.novusbio.com/NBP1-78983

Images

Immunocytochemistry/Immunofluorescence: UBCH6 Antibody [NBP1-78983] - UBCH6 antibody was tested in HeLa cells with FITC (green). Nuclei and alpha-tubulin were counterstained with DAPI (blue) and Dylight 594 (red).



Immunohistochemistry: UBCH6 Antibody [NBP1-78983] - IHC analysis of UBCH6 in mouse intestine using DAB with hematoxylin counterstain.

Updated 3/9/2013 2.0

Limitations: This product is for research use only and is not approved for use in humans or in clinical diagnosis. Products are guaranteed for six months from the date of receipt except for peptides and proteins which are guaranteed for 3 months. **For more information on our guarantee, please visit www.novusbio.com/guarantee.**

Novus USA

8100 Southpark Way, A-8
 Littleton, CO 80120
 p) 888-506-6887
 p) 303-730-1950
 f) 303-730-1966
novus@novusbio.com

Novus Canada

461 North Service Road West,
 Unit B37
 Oakville, ON L6M 2V5
 p) 855-668-8722
 f) 905-827-6402
canada@novusbio.com

Novus Europe

12 Cambridge Science Park
 Cambridge, UK CB4 0FQ
 UK: p) +44-1223-426-001, f) +44-871-971-1635
 DE: p) +49-6922-22340-60, f) +49-0800-58926-79
 IT: p) +39-02-4032-6786, f) +39-02-4032-6340
 FR: p) +33-1-76-77-45-30, f) +33-1-76-77-45-31
europe@novusbio.com

