

NBP1-78966**TET1 Antibody****Unit Size**

0.1 ml

Concentration

1 mg/ml

Storage

Store at 4C short term. Aliquot and store at -20C long term. Avoid freeze-thaw cycles.

Applications

IHC, IHC-P, ICC/IF (-), WB (-)

Species

Mouse

Host

Rabbit

Clonality

Polyclonal

Purity

Immunogen affinity purified

Preservative

0.05% Sodium Azide

Immunogen

A synthetic peptide made to an internal portion of the human TET1 protein (between residues 1700 to 1800) [UniProt Q8NFU7]

Recommended Dilutions

Immunohistochemistry-Paraffin 1:400, Western Blot (Negative), ICC/IF (Negative), Immunohistochemistry

Buffer

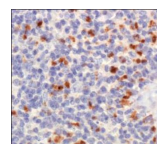
PBS, 30% glycerol

Uses

This TET1 antibody is useful for and Immunohistochemistry on paraffin embedded sections. In IHC-P, staining was observed in the nucleus and cytoplasm of mouse spleen tissue. Prior to immunostaining paraffin tissues, antigen retrieval with sodium citrate buffer (pH 6.0) is recommended. This antibody is not recommended for Western Blot or Immunocytochemistry/Immunofluorescence.

Images

Immunohistochemistry: TET1 Antibody [NBP1-78966] - IHC analysis of TET1 in mouse spleen using DAB with hematoxylin counterstain.



Updated 3/9/2013 2.0

Limitations: This product is for research use only and is not approved for use in humans or in clinical diagnosis. Products are guaranteed for six months from the date of receipt except for peptides and proteins which are guaranteed for 3 months. **For more information on our guarantee, please visit www.novusbio.com/guarantee.**

Novus USA

8100 Southpark Way, A-8
 Littleton, CO 80120
 p) 888-506-6887
 p) 303-730-1950
 f) 303-730-1966
novus@novusbio.com

Novus Canada

461 North Service Road West,
 Unit B37
 Oakville, ON L6M 2V5
 p) 855-668-8722
 f) 905-827-6402
canada@novusbio.com

Novus Europe

12 Cambridge Science Park
 Cambridge, UK CB4 0FQ
 UK: p) +44-1223-426-001, f) +44-871-971-1635
 DE: p) +49-6922-22340-60, f) +49-0800-58926-79
 IT: p) +39-02-4032-6786, f) +39-02-4032-6340
 FR: p) +33-1-76-77-45-30, f) +33-1-76-77-45-31
europe@novusbio.com

