

NBP1-77940**ECT2 Antibody****Unit Size**

0.1 mg

Concentration

0.95 mg/ml

Storage

Store at 4C short term. Aliquot and store at -20C long term. Avoid freeze-thaw cycles.

Applications

WB, ELISA

Species

Human, Mouse, Rat, Bovine, Zebrafish

Host

Rabbit

Clonality

Polyclonal

Purity

Immunogen affinity purified

Preservative

0.01% Sodium Azide

Specificity/Sensitivity

This antibody is directed against human MECT1 protein. A BLAST analysis was used to suggest cross reactivity with MECT1 protein from human, mouse, rat, zebrafish, pufferfish and bovine based on 100% identity with the immunizing sequence.

Immunogen

This affinity purified antibody was prepared from whole rabbit serum produced by repeated immunizations with a synthetic peptide corresponding to amino acids 19-34 of human MECT1 protein.

Recommended Dilutions

ELISA 1:10000 - 1:40000, Western Blot 1:500 - 1:2000

Buffer

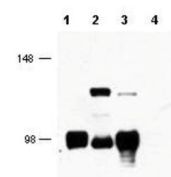
0.02 M Potassium Phosphate, 0.15 M Sodium Chloride, pH 7.2 Stabilizer: None

Uses

This affinity-purified antibody has been tested for use in ELISA and western blot. Expect a band approximately 80-95 kDa in size corresponding - MECT1 protein by western blotting in the appropriate cell lysate or extract. This antibody will react with isoform 1 and 2 of MECT1.

Images

Western Blot: ECT2 Antibody [NBP1-77940] - Shows detection of MECT2 (lower arrowhead) and MECT2:MAML2 fusion protein (top arrowhead) in cell lysates. Lane 1 contains lysate from cells expressing MECT2 only. Lane 2 contains lysate from cells ... See more at www.novusbio.com/NBP1-77940



Updated 3/9/2013 2.0

Limitations: This product is for research use only and is not approved for use in humans or in clinical diagnosis. Products are guaranteed for six months from the date of receipt except for peptides and proteins which are guaranteed for 3 months. **For more information on our guarantee, please visit www.novusbio.com/guarantee.**

Novus USA

8100 Southpark Way, A-8
 Littleton, CO 80120
 p) 888-506-6887
 p) 303-730-1950
 f) 303-730-1966
novus@novusbio.com

Novus Canada

461 North Service Road West,
 Unit B37
 Oakville, ON L6M 2V5
 p) 855-668-8722
 f) 905-827-6402
canada@novusbio.com

Novus Europe

12 Cambridge Science Park
 Cambridge, UK CB4 0FQ
 UK: p) +44-1223-426-001, f) +44-871-971-1635
 DE: p) +49-6922-22340-60, f) +49-0800-58926-79
 IT: p) +39-02-4032-6786, f) +39-02-4032-6340
 FR: p) +33-1-76-77-45-30, f) +33-1-76-77-45-31
europe@novusbio.com

