

NBP1-77860**SMAD1 [p Ser206] Antibody****Unit Size**

0.1 mg

Concentration

1.31 mg/ml

Storage

Aliquot and store at -20C or -80C. Avoid freeze-thaw cycles.

Applications

WB, ELISA

Species

Human, Mouse, Rat, Canine

Molecular Weight

52kDa

Host

Rabbit

Clonality

Polyclonal

Purity

Immunogen affinity purified

Preservative

0.01% Sodium Azide

Specificity/Sensitivity

Reactivity occurs against human SMAD1 pS206 protein and the antibody is specific for the phosphorylated form of the protein. Reactivity with non-phosphorylated human SMAD1 is minimal by ELISA and western blot.

Immunogen

phosphorylated synthetic peptide corresponding to the region of amino acids containing serine 206 of human SMAD1 protein.

Recommended Dilutions

ELISA 1:25000-1:30000, Western Blot 1:500

Buffer

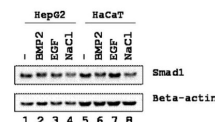
0.02 M Potassium Phosphate, 0.15 M Sodium Chloride, pH 7.2

Uses

This affinity purified antibody has been tested for use in ELISA and by western blot. Expect a band approximately 52 kDa in size corresponding - phosphorylated SMAD1 protein by western blotting in the appropriate stimulated tissue or cell lysate or extract. This antibody is specific for the phosphorylated pS206 of SMAD1. Stimulation of EGF, TGFbeta BMP2, and 0.5M NaCl are recommended for 1 hour.

Images

Western Blot: SMAD1 [p Ser206] Antibody [NBP1-77860] - This antibody was used at a 1:500 dilution in 1% BLOTTO and reacted for 1 hour at room temperature. Anti-beta actin staining was used as a loading control. The membrane was washed and re... See more at www.novusbio.com/NBP1-77860



Updated 3/9/2013 2.0

Limitations: This product is for research use only and is not approved for use in humans or in clinical diagnosis. Products are guaranteed for six months from the date of receipt except for peptides and proteins which are guaranteed for 3 months. **For more information on our guarantee, please visit www.novusbio.com/guarantee.**

Novus USA

8100 Southpark Way, A-8
 Littleton, CO 80120
 p) 888-506-6887
 p) 303-730-1950
 f) 303-730-1966
novus@novusbio.com

Novus Canada

461 North Service Road West,
 Unit B37
 Oakville, ON L6M 2V5
 p) 855-668-8722
 f) 905-827-6402
canada@novusbio.com

Novus Europe

12 Cambridge Science Park
 Cambridge, UK CB4 0FQ
 UK: p) +44-1223-426-001, f) +44-871-971-1635
 DE: p) +49-6922-22340-60, f) +49-0800-58926-79
 IT: p) +39-02-4032-6786, f) +39-02-4032-6340
 FR: p) +33-1-76-77-45-30, f) +33-1-76-77-45-31
europe@novusbio.com

