

NBP1-77858**SMAD1 [p Ser206] Antibody****Unit Size**

0.1 mg

Concentration

Please see the vial label for concentration.

Storage

Store at -20°C. Avoid freeze-thaw cycles.

Applications

WB, ELISA

Species

Human, Mouse, Rat, Canine

Host

Rabbit

Clonality

Polyclonal

Purity

Immunogen affinity purified

Preservative

0.01% Sodium Azide

Specificity/Sensitivity

This antibody is directed against the phosphorylated form of human SMAD1 protein at the pS206 residue.

Immunogen

This affinity purified antibody was prepared from whole rabbit serum produced by repeated immunizations with a phosphorylated synthetic peptide corresponding to the region of amino acids containing serine 206 of human SMAD1 protein.

Recommended Dilutions

ELISA 1:5000 - 1:25000, Western Blot 1:500 - 1:2000

Buffer

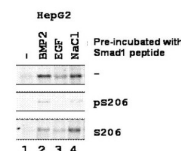
0.02 M Potassium Phosphate, 0.15 M Sodium Chloride, pH 7.2 Stabilizer: None

Uses

This affinity purified antibody has been tested for use in ELISA and by western blot. Expect a band approximately 52 kDa in size corresponding - phosphorylated SMAD1 protein by western blotting in the appropriate stimulated tissue or cell lysate or extract. This antibody is specific for the phosphorylated pS206 of SMAD1. Stimulation of EGF, TGFbeta BMP2, and 0.5M NaCl are recommended for 1 hour.

Images

Western Blot: SMAD1 [p Ser206] Antibody [NBP1-77858] - Shows detection of endogenous phosphorylated SMAD1 in whole cell lysates from human hepatoma (HEPG2, lanes 1-4) derived cell lines treated with PBS, BMP2 (5 ug/ml), EGF and reacted for 1... See more at www.novusbio.com/NBP1-77858



Updated 3/9/2013 2.0

Limitations: This product is for research use only and is not approved for use in humans or in clinical diagnosis. Products are guaranteed for six months from the date of receipt except for peptides and proteins which are guaranteed for 3 months. **For more information on our guarantee, please visit www.novusbio.com/guarantee.**

Novus USA

8100 Southpark Way, A-8
 Littleton, CO 80120
 p) 888-506-6887
 p) 303-730-1950
 f) 303-730-1966
novus@novusbio.com

Novus Canada

461 North Service Road West,
 Unit B37
 Oakville, ON L6M 2V5
 p) 855-668-8722
 f) 905-827-6402
canada@novusbio.com

Novus Europe

12 Cambridge Science Park
 Cambridge, UK CB4 0FQ
 UK: p) +44-1223-426-001, f) +44-871-971-1635
 DE: p) +49-6922-22340-60, f) +49-0800-58926-79
 IT: p) +39-02-4032-6786, f) +39-02-4032-6340
 FR: p) +33-1-76-77-45-30, f) +33-1-76-77-45-31
europe@novusbio.com

