

NBP1-77305**SKI Antibody****Unit Size**

0.1 mg

Concentration

1 mg/ml

Storage

Store at 4C short term. Aliquot and store at -20C long term. Avoid freeze-thaw cycles.

Applications

WB, ELISA, ICC/IF

Species

Human

Host

Rabbit

Clonality

Polyclonal

Purity

Affinity purified

Preservative

0.02% Sodium Azide

Immunogen

Antibody was raised against a 14 amino acid peptide from near the amino terminus of human Ski.

Recommended Dilutions

ELISA, Immunocytochemistry/Immunofluorescence, Western Blot

Buffer

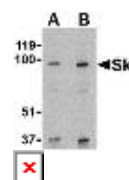
PBS containing 0.02% sodium azide.

Uses

This antibody can be used for detection of Ski by Western blot at 1 - 2 mg/ml.

Images

Western Blot: SKI Antibody [NBP1-77305] - Human kidney tissue lysate with Ski antibody at (A) 1 and (B) 2 u/mL.



Immunocytochemistry/Immunofluorescence: SKI Antibody [NBP1-77305] - Immunofluorescence of Ski in human kidney tissue with Ski antibody at 20 ug/ml.

Updated 3/9/2013 2.0

Limitations: This product is for research use only and is not approved for use in humans or in clinical diagnosis. Products are guaranteed for six months from the date of receipt except for peptides and proteins which are guaranteed for 3 months. **For more information on our guarantee, please visit www.novusbio.com/guarantee.**

Novus USA
 8100 Southpark Way, A-8
 Littleton, CO 80120
 p) 888-506-6887
 p) 303-730-1950
 f) 303-730-1966
novus@novusbio.com
Novus Canada
 461 North Service Road West,
 Unit B37
 Oakville, ON L6M 2V5
 p) 855-668-8722
 f) 905-827-6402
canada@novusbio.com
Novus Europe
 12 Cambridge Science Park
 Cambridge, UK CB4 0FQ
 UK: p) +44-1223-426-001, f) +44-871-971-1635
 DE: p) +49-6922-22340-60, f) +49-0800-58926-79
 IT: p) +39-02-4032-6786, f) +39-02-4032-6340
 FR: p) +33-1-76-77-45-30, f) +33-1-76-77-45-31
europe@novusbio.com
