

NBP1-77224**BCL2L10 Antibody****Unit Size**

0.1 mg

Concentration

1 mg/ml

Storage

Store at 4C short term. Aliquot and store at -20C long term. Avoid freeze-thaw cycles.

Applications

WB, ELISA, ICC/IF, IHC, IHC-P

Species

Human

Host

Rabbit

Clonality

Polyclonal

Purity

Affinity purified

Preservative

0.02% Sodium Azide

Immunogen

Antibody was raised against a 16 amino acid peptide from near the amino terminus of human Bcl-B.

Recommended Dilutions

ELISA, Immunocytochemistry/Immunofluorescence, Immunohistochemistry, Immunohistochemistry-Paraffin, Western Blot

Buffer

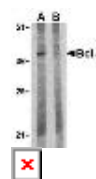
PBS containing 0.02% sodium azide.

Uses

This antibody can be used for the detection of Bcl-B by Western blot at 1 - 2 mg/ml.

Images

Western Blot: BCL2L10 Antibody [NBP1-77224] - Jurkat lysate with BCL2L10 antibody at 1 ug/ml in the (A) absence and (B) presence of blocking peptide.



Immunocytochemistry/Immunofluorescence:

BCL2L10 Antibody [NBP1-77224] - Jurkat cells with BCL2L10 antibody at 10 ug/ml.

Updated 3/9/2013 2.0

Limitations: This product is for research use only and is not approved for use in humans or in clinical diagnosis. Products are guaranteed for six months from the date of receipt except for peptides and proteins which are guaranteed for 3 months. **For more information on our guarantee, please visit www.novusbio.com/guarantee.**

Novus USA

8100 Southpark Way, A-8
 Littleton, CO 80120
 p) 888-506-6887
 p) 303-730-1950
 f) 303-730-1966
novus@novusbio.com

Novus Canada

461 North Service Road West,
 Unit B37
 Oakville, ON L6M 2V5
 p) 855-668-8722
 f) 905-827-6402
canada@novusbio.com

Novus Europe

12 Cambridge Science Park
 Cambridge, UK CB4 0FQ
 UK: p) +44-1223-426-001, f) +44-871-971-1635
 DE: p) +49-6922-22340-60, f) +49-0800-58926-79
 IT: p) +39-02-4032-6786, f) +39-02-4032-6340
 FR: p) +33-1-76-77-45-30, f) +33-1-76-77-45-31
europe@novusbio.com

