

NBP1-79240**UBXD2 Antibody****Unit Size**

0.1 mg

Concentration

Lyoph

Storage

Store at -20C. Avoid freeze-thaw cycles.

Applications

WB, IHC-P

Species

Human, Mouse, Rat, Bovine, Canine, Chicken, Xenopus, Zebrafish

Host

Rabbit

Clonality

Polyclonal

Purity

IgG purified

Preservative

No Preservative

Immunogen

Synthetic peptide directed towards the middle region of human UBXD2. The immunogen for this antibody is UBXD2.

Recommended Dilutions

Immunohistochemistry-Paraffin, Western Blot 1:1000

Buffer

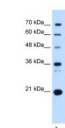
PBS & 2% Sucrose lyophilized with the antibody. Centrifuge the vial of lyoph antibody at 12,000 x g for 20 seconds. Add 100ul of distilled water. Vortex followed by centrifuge again to pellet the solution. Final concentration is 1 mg/ml in PBS buffer

Uses

This is a rabbit polyclonal antibody against UBXD2 and was validated on Western Blot and immunohistochemistry.

Images

Western Blot: UBXD2 Antibody [NBP1-79240] - Titration: 2.5 ug/ml Positive Control: HepG2 cell lysate.



Immunohistochemistry-Paraffin: UBXD2 Antibody [NBP1-79240] - Human kidney Tissue, antibody concentration 4-8ug/ml. Cells with positive label: renal corpuscle cells (indicated with arrows) 400X magnification.



Updated 3/9/2013 2.0

Limitations: This product is for research use only and is not approved for use in humans or in clinical diagnosis. Products are guaranteed for six months from the date of receipt except for peptides and proteins which are guaranteed for 3 months. **For more information on our guarantee, please visit www.novusbio.com/guarantee.**

Novus USA
 8100 Southpark Way, A-8
 Littleton, CO 80120
 p) 888-506-6887
 p) 303-730-1950
 f) 303-730-1966
novus@novusbio.com
Novus Canada
 461 North Service Road West,
 Unit B37
 Oakville, ON L6M 2V5
 p) 855-668-8722
 f) 905-827-6402
canada@novusbio.com
Novus Europe
 12 Cambridge Science Park
 Cambridge, UK CB4 0FQ
 UK: p) +44-1223-426-001, f) +44-871-971-1635
 DE: p) +49-6922-22340-60, f) +49-0800-58926-79
 IT: p) +39-02-4032-6786, f) +39-02-4032-6340
 FR: p) +33-1-76-77-45-30, f) +33-1-76-77-45-31
europe@novusbio.com
