

NBP1-92683**Adenylate Cyclase 3 Antibody****Unit Size**

0.1 ml

Concentration

1 mg/ml

Storage

Store at 4C short term. Aliquot and store at -20C long term. Avoid freeze-thaw cycles.

Applications

WB, ICC/IF

Species

Human, Rat

Host

Rabbit

Clonality

Polyclonal

Purity

Immunogen affinity purified

Preservative

0.05% Sodium Azide

Immunogen

A 20 amino acid peptide corresponding to the C-terminus of rat Adenylate Cyclase 3. [UniProt# P21932]

Recommended Dilutions

Immunocytochemistry/Immunofluorescence 1:500-1:1000, Western Blot 1:5000 - 1:10000

Buffer

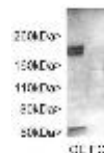
PBS

Uses

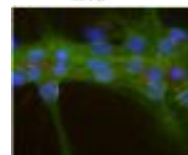
This Adenylate Cyclase 3 antibody is useful for Immunocytochemistry/Immunofluorescence and Western blot, where bands can be seen at 160-200 kDa (depending on the tissue). In WB, bands can be seen at about 200kDa in olfactory epithelium which is rich in cilia. Fewer cilia are found in frontal cortex, and the protein is less heavily glycosylated, and a less prominent band is seen at about 160kDa.

Images

Western Blot: Adenylate Cyclase 3 Antibody [NBP1-92683] - Western blot of rat olfactory epithelium (OE) and frontal cortex (FC). NBP1-92683 stains a band at about 200kDa in olfactory epithelium which is rich in cilia. Fewer cilia are found i... See more at www.novusbio.com/NBP1-92683



Immunofluorescence: Adenylate Cyclase 3 Antibody [NBP1-92683] - Mixed neuron-glial cultures stained with Adenylate Cyclase 3 antibody (NBP1-92683, red) and Alpha Fodrin antibody (NBP1-92689, green). Note the strong and clean staining of neur... See more at www.novusbio.com/NBP1-92683



Updated 3/9/2013 2.0

Limitations: This product is for research use only and is not approved for use in humans or in clinical diagnosis. Products are guaranteed for six months from the date of receipt except for peptides and proteins which are guaranteed for 3 months. **For more information on our guarantee, please visit www.novusbio.com/guarantee.**

Novus USA

8100 Southpark Way, A-8
 Littleton, CO 80120
 p) 888-506-6887
 p) 303-730-1950
 f) 303-730-1966
novus@novusbio.com

Novus Canada

461 North Service Road West,
 Unit B37
 Oakville, ON L6M 2V5
 p) 855-668-8722
 f) 905-827-6402
canada@novusbio.com

Novus Europe

12 Cambridge Science Park
 Cambridge, UK CB4 0FQ
 UK: p) +44-1223-426-001, f) +44-871-971-1635
 DE: p) +49-6922-22340-60, f) +49-0800-58926-79
 IT: p) +39-02-4032-6786, f) +39-02-4032-6340
 FR: p) +33-1-76-77-45-30, f) +33-1-76-77-45-31
europe@novusbio.com

