

**NBP1-97417****TRPV1 Antibody****Unit Size**

0.1 ml

**Concentration**

1.30 mg/ml

**Storage**

Store at 4°C short term. Aliquot and store at -20°C long term. Avoid freeze-thaw cycles.

**Applications**

WB, ICC/IF, IHC (-)

**Species**

Human, Mouse, Rat, Primate

**Host**

Rabbit

**Clonality**

Polyclonal

**Purity**

Affinity purified

**Preservative**

0.05% Sodium Azide

**Immunogen**

A synthetic peptide made to an N-terminal portion of the rat TRPV1 protein (between residues 1-50) [UniProt O35433]

**Recommended Dilutions**

Immunocytochemistry 1:40

Immunofluorescence 1:40

Immunohistochemistry (-)

Western Blot 1:1000

**Buffer**

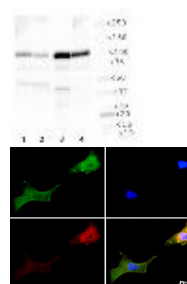
PBS, 30% glycerol

**Uses**

This TRPV1 antibody is useful for Western Blot and Immunocytochemistry/Immunofluorescence. In Western Blot, a band is seen ~100 kDa representing TRPV1. In ICC/IF, plasma membrane staining is observed in Ntera-2 cells. This antibody is not recommended for IHC-paraffin embedded sections.

**Images**

Western Blot: TRPV1 Antibody [NBP1-97417] - WB analysis of TRPV1 in 1. Ntera2 cell lysate, 2. HepG2 cell lysate, 3. MCF7 cell lysate and 4. Cos7 cell lysate.



Immunocytochemistry/Immunofluorescence: TRPV1 Antibody [NBP1-97417] - TRPV1 antibody was tested in Ntera-2 cells with FITC (green). Nuclei and alpha-tubulin were counterstained with DAPI (blue) and DyLight 594 (red).

Updated 3/9/2013 2.0

**Limitations:** This product is for research use only and is not approved for use in humans or in clinical diagnosis. Products are guaranteed for six months from the date of receipt except for peptides and proteins which are guaranteed for 3 months. **For more information on our guarantee, please visit [www.novusbio.com/guarantee](http://www.novusbio.com/guarantee).**

**Novus USA**

8100 Southpark Way, A-8  
 Littleton, CO 80120  
 p) 888-506-6887  
 p) 303-730-1950  
 f) 303-730-1966  
[novus@novusbio.com](mailto:novus@novusbio.com)

**Novus Canada**

461 North Service Road West,  
 Unit B37  
 Oakville, ON L6M 2V5  
 p) 855-668-8722  
 f) 905-827-6402  
[canada@novusbio.com](mailto:canada@novusbio.com)

**Novus Europe**

12 Cambridge Science Park  
 Cambridge, UK CB4 0FQ  
 UK: p) +44-1223-426-001, f) +44-871-971-1635  
 DE: p) +49-6922-22340-60, f) +49-0800-58926-79  
 IT: p) +39-02-4032-6786, f) +39-02-4032-6340  
 FR: p) +33-1-76-77-45-30, f) +33-1-76-77-45-31  
[europe@novusbio.com](mailto:europe@novusbio.com)

