

NBP1-97313**SUV420h1 Antibody****Unit Size**

0.1 ml

Concentration

1.16 mg/ml

Storage

Store at 4C short term. Aliquot and store at -20C long term. Avoid freeze-thaw cycles.

Applications

ICC/IF, IHC, IHC-P, WB (-)

Species

Human, Mouse

Host

Rabbit

Clonality

Polyclonal

Purity

Affinity purified

Preservative

0.05% Sodium Azide

Immunogen

A synthetic peptide made to an internal portion of the human SUV420h1 protein (between residues 450-500) [UniProt Q4FZB7]

Recommended Dilutions

Immunohistochemistry-Paraffin 1:200, Western Blot (-), Immunocytochemistry/Immunofluorescence 1:100, Immunohistochemistry

Buffer

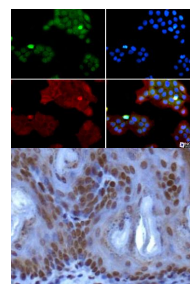
PBS, 30% glycerol

Uses

This SUV420h1 antibody is useful for Immunocytochemistry/Immunofluorescence and IHC-paraffin embedded sections. In ICC/IF, nuclear staining was observed in A431 cells. In IHC-P, staining was observed in the nucleus of mouse epidermis tissue. Prior to immunostaining paraffin tissues, antigen retrieval with sodium citrate buffer (pH 6.0) is recommended. This antibody is not recommended for Western B... See more at www.novusbio.com/NBP1-97313

Images

Immunocytochemistry/Immunofluorescence:
 SUV420h1 Antibody [NBP1-97313] - SUV420h1 antibody was tested in A431 cells with FITC (green). Nuclei and alpha-tubulin were counterstained with DAPI (blue) and Dylight 594 (red).



Immunohistochemistry: SUV420h1 Antibody [NBP1-97313] - IHC analysis of SUV420h1 in mouse epidermis using DAB with hematoxylin counterstain.

Updated 3/9/2013 2.0

Limitations: This product is for research use only and is not approved for use in humans or in clinical diagnosis. Products are guaranteed for six months from the date of receipt except for peptides and proteins which are guaranteed for 3 months. **For more information on our guarantee, please visit www.novusbio.com/guarantee.**

Novus USA

8100 Southpark Way, A-8
 Littleton, CO 80120
 p) 888-506-6887
 p) 303-730-1950
 f) 303-730-1966
novus@novusbio.com

Novus Canada

461 North Service Road West,
 Unit B37
 Oakville, ON L6M 2V5
 p) 855-668-8722
 f) 905-827-6402
canada@novusbio.com

Novus Europe

12 Cambridge Science Park
 Cambridge, UK CB4 0FQ
 UK: p) +44-1223-426-001, f) +44-871-971-1635
 DE: p) +49-6922-22340-60, f) +49-0800-58926-79
 IT: p) +39-02-4032-6786, f) +39-02-4032-6340
 FR: p) +33-1-76-77-45-30, f) +33-1-76-77-45-31
europe@novusbio.com

