

NBP2-01801**CAMLG Antibody (1A3)****Unit Size**

0.1 ml

Concentration

Please see the vial label for concentration.

Storage

Store at 4°C short term. Aliquot and store at -20°C long term. Avoid freeze-thaw cycles.

Applications

WB, FLOW, ICC/IF, IHC, IHC-P

Species

Human

Host

Mouse

Clonality

Monoclonal

Isotype

IgG1

Purity

Affinity purified

Preservative

0.02% Sodium Azide

Immunogen

Full length human recombinant protein of human CAMLG(NP_001736) produced in HEK293T cell.

Recommended Dilutions

Western Blot 1:2000, Immunohistochemistry-Paraffin 1:150, Immunocytochemistry/Immunofluorescence 1:100, Flow Cytometry 1:100, Immunohistochemistry

Buffer

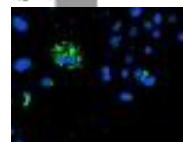
PBS (PH 7.3) containing 1% BSA, 50% glycerol

Images (more available at www.novusbio.com/NBP2-01801)

Western Blot: CAMLG Antibody (1A3) [NBP2-01801]
 - HEK293T cells were transfected with the pCMV6-ENTRY control (Left lane) or pCMV6-ENTRY CAMLG (Right lane) cDNA for 48 hrs and lysed. Equivalent amounts of cell lysates (5 ug per lane) were se... See more at www.novusbio.com/NBP2-01801



Immunocytochemistry/Immunofluorescence:
 CAMLG Antibody (1A3) [NBP2-01801] Staining of COS7 cells transiently transfected by pCMV6-ENTRY CAMLG.



Updated 3/9/2013 2.0

Limitations: This product is for research use only and is not approved for use in humans or in clinical diagnosis. Products are guaranteed for six months from the date of receipt except for peptides and proteins which are guaranteed for 3 months. **For more information on our guarantee, please visit www.novusbio.com/guarantee.**

Novus USA

8100 Southpark Way, A-8
 Littleton, CO 80120
 p) 888-506-6887
 p) 303-730-1950
 f) 303-730-1966
novus@novusbio.com

Novus Canada

461 North Service Road West,
 Unit B37
 Oakville, ON L6M 2V5
 p) 855-668-8722
 f) 905-827-6402
canada@novusbio.com

Novus Europe

12 Cambridge Science Park
 Cambridge, UK CB4 0FQ
 UK: p) +44-1223-426-001, f) +44-871-971-1635
 DE: p) +49-6922-22340-60, f) +49-0800-58926-79
 IT: p) +39-02-4032-6786, f) +39-02-4032-6340
 FR: p) +33-1-76-77-45-30, f) +33-1-76-77-45-31
europe@novusbio.com

