

**NBP2-02487****NME4 Antibody (1A5)****Unit Size**

0.1 ml

**Concentration**

Please see the vial label for concentration.

**Storage**

Store at 4°C short term. Aliquot and store at -20°C long term. Avoid freeze-thaw cycles.

**Applications**

WB, FLOW, ICC/IF, IHC, IHC-P

**Species**

Human

**Host**

Mouse

**Clonality**

Monoclonal

**Isotype**

IgG2b

**Purity**

Affinity purified

**Preservative**

0.02% Sodium Azide

**Immunogen**

Full length human recombinant protein of human NME4 (NP\_005000) produced in HEK293T cell.

**Recommended Dilutions**

Western Blot 1:2000, Immunohistochemistry-Paraffin 1:50, Immunocytochemistry/Immunofluorescence 1:100, Flow Cytometry 1:100, Immunohistochemistry

**Buffer**

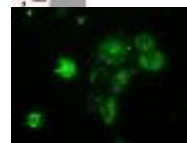
PBS (pH 7.3) containing 1% BSA, 50% glycerol

**Images** (more available at [www.novusbio.com/NBP2-02487](http://www.novusbio.com/NBP2-02487))

Western Blot: NME4 Antibody (1A5) [NBP2-02487] - HEK293T cells were transfected with the pCMV6-ENTRY control (Left lane) or pCMV6-ENTRY NME4 (Right lane) cDNA for 48 hrs and lysed. Equivalent amounts of cell lysates (5 ug per lane) were separated on 10% SDS-PAGE and transferred to nitrocellulose. Blot was probed with NME4 Antibody (1A5) [NBP2-02487] and detected by ECL. See more at [www.novusbio.com/NBP2-02487](http://www.novusbio.com/NBP2-02487)



Immunocytochemistry/Immunofluorescence: NME4 Antibody (1A5) [NBP2-02487] Staining of COS7 cells transiently transfected by pCMV6-ENTRY NME4.



Updated 3/9/2013 2.0

**Limitations:** This product is for research use only and is not approved for use in humans or in clinical diagnosis. Products are guaranteed for six months from the date of receipt except for peptides and proteins which are guaranteed for 3 months. **For more information on our guarantee, please visit [www.novusbio.com/guarantee](http://www.novusbio.com/guarantee).**

**Novus USA**

8100 Southpark Way, A-8  
 Littleton, CO 80120  
 p) 888-506-6887  
 p) 303-730-1950  
 f) 303-730-1966  
[novus@novusbio.com](mailto:novus@novusbio.com)

**Novus Canada**

461 North Service Road West,  
 Unit B37  
 Oakville, ON L6M 2V5  
 p) 855-668-8722  
 f) 905-827-6402  
[canada@novusbio.com](mailto:canada@novusbio.com)

**Novus Europe**

12 Cambridge Science Park  
 Cambridge, UK CB4 0FQ  
 UK: p) +44-1223-426-001, f) +44-871-971-1635  
 DE: p) +49-6922-22340-60, f) +49-0800-58926-79  
 IT: p) +39-02-4032-6786, f) +39-02-4032-6340  
 FR: p) +33-1-76-77-45-30, f) +33-1-76-77-45-31  
[europe@novusbio.com](mailto:europe@novusbio.com)

