

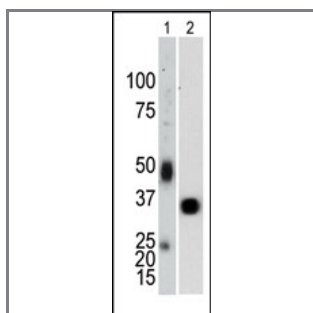
## PTP1B Antibody

### Purified Mouse Monoclonal Antibody (Mab)

<b>Catalog #</b>	<b>Applications:</b>	<b>Reactivity:</b>	<b>Accessions:</b>
AM8411b	WB, E	H, M	<a href="#">P18031</a>

<b>Concentration:</b>	<b>Size:</b>	<b>Isotype:</b>	<b>Clone Name:</b>
Ascites; 0.25mg/ml	50ul; 0.1mg	Mouse IgG1	107AT690

**Application Data:** **Calculated MW: 49966 Da**



The monoclonal antibody anti-PTP1b (Cat. #AM8411b) is used in Western blot to detect PTP1b in mouse lung tissue lysate (Lane 1) and recombinant protein PTP1b [1-321] (Lane 2)

<b>Gene ID:</b>	<b>Gene Symbol:</b>
<a href="#">5770</a>	PTPN1

#### Other Names:

Tyrosine-protein phosphatase non-receptor type 1; Protein-tyrosine phosphatase 1B; PTP-1B; PTPN1; PTP1B

#### Target/Specificity:

This monoclonal antibody is generated from mice immunized with a recombinant protein human PTP1b.

#### Application Notes:

ELISA 1:1,000  
 Western blotting 1:100~500

#### Format:

Mouse ascites with 0.09% (W/V) sodium azide.

#### Storage:

Maintain refrigerated at 2-8°C for up to 6 months. For long term storage store at -20°C in small aliquots to prevent freeze-thaw cycles.

**Precautions:**

PTP1B Antibody is for research use only and not for use in diagnostic or therapeutic procedures.

---