

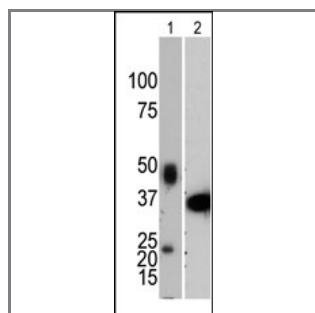
## PTP1B Antibody

Purified Mouse Monoclonal Antibody (Mab)

|                  |                      |                    |                        |
|------------------|----------------------|--------------------|------------------------|
| <b>Catalog #</b> | <b>Applications:</b> | <b>Reactivity:</b> | <b>Accessions:</b>     |
| AM8411a          | WB, E                | H, M               | <a href="#">P18031</a> |

|                       |              |                 |                    |
|-----------------------|--------------|-----------------|--------------------|
| <b>Concentration:</b> | <b>Size:</b> | <b>Isotype:</b> | <b>Clone Name:</b> |
| 0.25mg/ml             | 0.1 mg       | Mouse IgG1      | 107AT531           |

**Application Data:** **Calculated MW: 49966 Da**



The monoclonal antibody anti-PTP1b (Cat. #AM8411a) is used in Western blot to detect PTP1b in mouse lung tissue extract (Lane 1) and recombinant PTP1b protein [1-321] (Lane 2)

|                      |                     |
|----------------------|---------------------|
| <b>Gene ID:</b>      | <b>Gene Symbol:</b> |
| <a href="#">5770</a> | PTPN1               |

**Other Names:**

Tyrosine-protein phosphatase non-receptor type 1; Protein-tyrosine phosphatase 1B; PTP-1B; PTPN1; PTP1B

**Target/Specificity:**

This monoclonal antibody is generated from mice immunized with a recombinant protein human PTP1b (amino acid 1-321).

**Application Notes:**

ELISA 1:1,000  
Western blotting 1:100~500

**Format:**

Mouse ascites with 0.09% (W/V) sodium azide.

**Storage:**

Maintain refrigerated at 2-8°C for up to 6 months. For long term storage store at -20°C in small aliquots to prevent freeze-thaw cycles.

**Precautions:**

PTP1B Antibody is for research use only and not for use in diagnostic or therapeutic procedures.

---