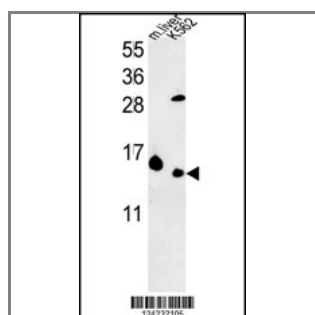


RPL37 Antibody (C-term)

Purified Rabbit Polyclonal Antibody (Pab)

Catalog #	Applications:	Reactivity:	Accessions:
AP9565b	WB, E	H	P61927
Concentration:	Size:	Isotype:	Clone Name:
0.25 mg/ml	0.1 mg	Rabbit Ig	RB24232

Application Data: **Calculated MW: 11078 Da**



RPL37 Antibody (C-term) (Cat. #AP9565b) western blot analysis in K562 cell line and mouse liver tissue lysates (35ug/lane). This demonstrates the RPL37 antibody detected the RPL37 protein (arrow).

Gene ID: [6167](#)
Gene Symbol: RPL37

Other Names:

G1.16; 60S ribosomal protein L37, RPL37

Target/Specificity:

This RPL37 antibody is generated from rabbits immunized with a KLH conjugated synthetic peptide between 67~96 amino acids from the C-terminal region of human RPL37 Antibody (C-term).

Application Notes:

The suggested dilution is:

ELISA 1:1,000

Western blotting 1:100~500

Format:

Purified rabbit polyclonal antibody supplied in PBS with 0.09% (W/V) sodium azide. This antibody is purified through a protein G column, eluted with high and low pH buffers and neutralized immediately, followed by dialysis against PBS.

Storage:

Maintain refrigerated at 2-8°C for up to 6 months. For long term storage store at -20°C in small aliquots to prevent freeze-thaw cycles.

Precautions:

RPL37 Antibody (C-term) is for research use only and not for use in diagnostic or therapeutic procedures.
