

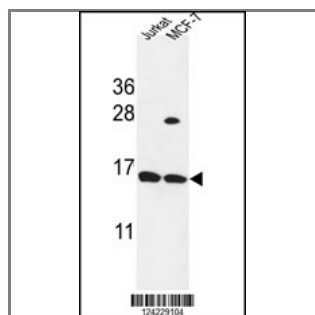
SPRR1A Antibody (C-term)

Peptide Affinity Purified Rabbit Polyclonal Antibody (Pab)

Catalog #	Applications:	Reactivity:	Accessions:
AP9563a	WB, E	H	P35321
Concentration:	Size:	Isotype:	Clone Name:
0.25 mg/ml	0.1 mg	Rabbit Ig	RB24229

Application Data:

Calculated MW: 9877 Da



SPRR1A Antibody (C-term) (Cat. #AP9563a) western blot analysis in Jurkat, MCF-7 cell line lysates (35ug/lane). This demonstrates the SPRR1A antibody detected the SPRR1A protein (arrow).

Gene ID:	Gene Symbol:
6698	SPRR1A

Other Names:

19 kDa pancornulin; SPRK; Small proline-rich protein 1A, SPR-1A; Cornifin-A; SPRR1A

Target/Specificity:

This SPRR1A antibody is generated from rabbits immunized with a KLH conjugated synthetic peptide between 60~89 amino acids from the C-terminal region of human SPRR1A.

Application Notes:

The suggested dilution is:

ELISA 1:1,000

Western blotting 1:100~500

Format:

Purified polyclonal antibody supplied in PBS with 0.09% (W/V) sodium azide. This antibody is purified through a protein A column, followed by peptide affinity purification.

Storage:

Maintain refrigerated at 2-8°C for up to 6 months. For long term storage store at -20°C in

small aliquots to prevent freeze-thaw cycles.

Precautions:

SPRR1A Antibody (C-term) is for research use only and not for use in diagnostic or therapeutic procedures.
