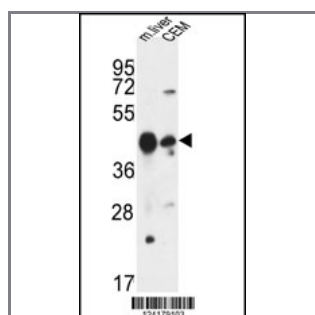


## PLA1A Antibody (Center)

### Peptide Affinity Purified Rabbit Polyclonal Antibody (Pab)

Catalog #	Applications:	Reactivity:	Accessions:
AP9548c	WB, E	H, M	<a href="#">Q53H76</a>
Concentration:	Size:	Isotype:	Clone Name:
0.25 mg/ml	0.1 mg	Rabbit Ig	RB24179

**Application Data:** **Calculated MW: 49715 Da**



PLA1A Antibody (Center) (Cat. #AP9548c) western blot analysis in mouse liver tissue and CEM cell line lysates (35ug/lane). This demonstrates the PLA1A antibody detected the PLA1A protein (arrow).

**Gene ID:** [51365](#) **Gene Symbol:** PLA1A

#### Other Names:

Phosphatidylserine-specific phospholipase A1, PS-PLA1; Phospholipase A1 member A; PSPLA1, NMD, PLA1A

#### Target/Specificity:

This PLA1A antibody is generated from rabbits immunized with a KLH conjugated synthetic peptide between 336~366 amino acids from the Central region of human PLA1A.

#### Application Notes:

The suggested dilution is:

ELISA 1:1,000

Western blotting 1:100~500

Immunohistochemistry 1:50~100

#### Format:

Purified polyclonal antibody supplied in PBS with 0.09% (W/V) sodium azide. This antibody is purified through a protein A column, followed by peptide affinity purification.

#### Storage:

Maintain refrigerated at 2-8°C for up to 6 months. For long term storage store at -20°C in small aliquots to prevent freeze-thaw cycles.

---

**Precautions:**

PLA1A Antibody (Center) is for research use only and not for use in diagnostic or therapeutic procedures.

---