

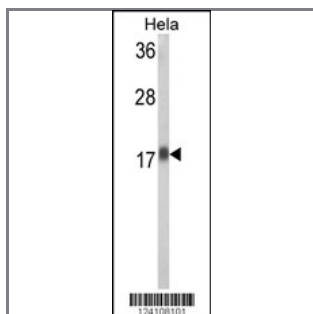
RPL31 Antibody (Center)

Peptide Affinity Purified Rabbit Polyclonal Antibody (Pab)

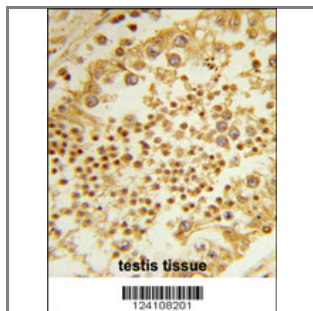
Catalog #	Applications:	Reactivity:	Accessions:
AP9532c	WB, FC, IHC, E	H	NP_001092047 , P62899
Concentration:	Size:	Isotype:	Clone Name:
0.25 mg/ml	0.1 mg	Rabbit Ig	RB24108

Application Data:

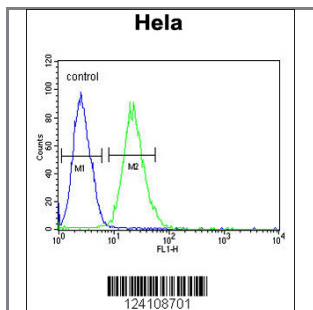
Calculated MW: 14463 Da



Western blot analysis of RPL31 Antibody (Center) (Cat. #AP9532c) in HeLa cell line lysates (35ug/lane).RPL31 (arrow) was detected using the purified Pab.



Formalin-fixed and paraffin-embedded human testis tissue reacted with RPL31 Antibody (Center), which was peroxidase-conjugated to the secondary antibody, followed by DAB staining. This data demonstrates the use of this antibody for immunohistochemistry; clinical relevance has not been evaluated.



RPL31 Antibody (Center) (Cat. #AP9532c) flow cytometric analysis of HeLa cells (right histogram) compared to a negative control cell (left histogram).FITC-conjugated goat-anti-rabbit secondary antibodies were used for the analysis.

Gene ID: Gene Symbol:

[6160](#)

RPL31

Other Names:

60S ribosomal protein L31; RPL31

Target/Specificity:

This RPL31 antibody is generated from rabbits immunized with a KLH conjugated synthetic peptide selected from the Central region of human RPL31.

Application Notes:

The suggested dilution is:

ELISA 1:1,000

Western blotting 1:100~500

Immunohistochemistry 1:50~100

Flow cytometric 1:10~50

Format:

Purified polyclonal antibody supplied in PBS with 0.09% (W/V) sodium azide. This antibody is purified through a protein A column, followed by peptide affinity purification.

Storage:

Maintain refrigerated at 2-8°C for up to 6 months. For long term storage store at -20°C in small aliquots to prevent freeze-thaw cycles.

Precautions:

RPL31 Antibody (Center) is for research use only and not for use in diagnostic or therapeutic procedures.
