

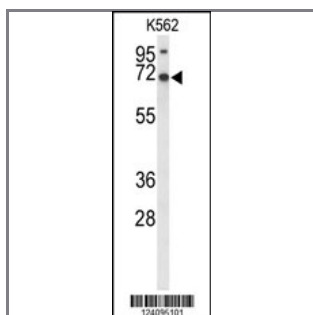
LRRC4 Antibody (C-term)

Peptide Affinity Purified Rabbit Polyclonal Antibody (Pab)

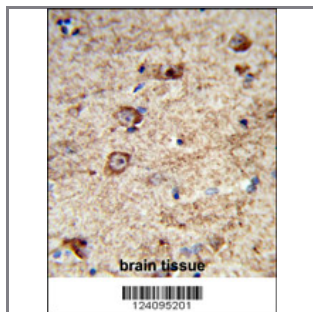
Catalog #	Applications:	Reactivity:	Accessions:
AP9530b	WB, IHC, E	H	Q9HBW1
Concentration:	Size:	Isotype:	Clone Name:
0.25 mg/ml	0.1 mg	Rabbit Ig	RB24095

Application Data:

Calculated MW: 72717 Da



Western blot analysis of LRRC4 Antibody (C-term) (Cat. #AP9530b) in K562 cell line lysates (35ug/lane). LRRC4 (arrow) was detected using the purified Pab.



Formalin-fixed and paraffin-embedded human brain tissue reacted with LRRC4 Antibody (C-term), which was peroxidase-conjugated to the secondary antibody, followed by DAB staining. This data demonstrates the use of this antibody for immunohistochemistry; clinical relevance has not been evaluated.

Gene ID:	Gene Symbol:
64101	LRRC4

Other Names:

Nasopharyngeal carcinoma-associated gene 14 protein; Brain tumor-associated protein BAG; Netrin-G2 ligand, NGL-2; Leucine-rich repeat-containing protein 4; UNQ554/PRO1111, NAG14, BAG, LRRC4

Target/Specificity:

This LRRC4 antibody is generated from rabbits immunized with a KLH conjugated synthetic peptide between 536~565 amino acids from the C-terminal region of human LRRC4.

Application Notes:

The suggested dilution is:

ELISA 1:1,000
Western blotting 1:100~500
Immunohistochemistry 1:50~100

Format:

Purified polyclonal antibody supplied in PBS with 0.09% (W/V) sodium azide. This antibody is purified through a protein A column, followed by peptide affinity purification.

Storage:

Maintain refrigerated at 2-8°C for up to 6 months. For long term storage store at -20°C in small aliquots to prevent freeze-thaw cycles.

Precautions:

LRRC4 Antibody (C-term) is for research use only and not for use in diagnostic or therapeutic procedures.
