

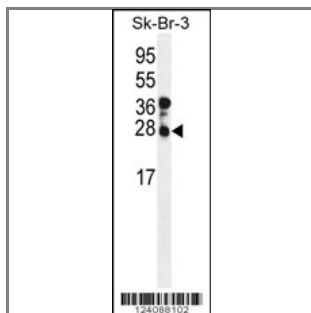
CHMP4B Antibody (N-term)

Peptide Affinity Purified Rabbit Polyclonal Antibody (Pab)

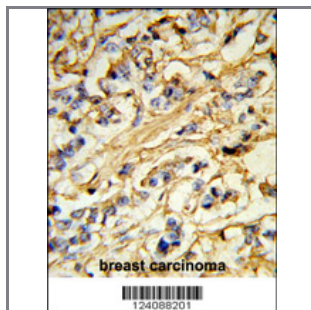
Catalog #	Applications:	Reactivity:	Accessions:
AP9528a	WB, IHC, FC, E	H	Q9H444 , NP_789782
Concentration:	Size:	Isotype:	Clone Name:
0.25 mg/ml	0.1 mg	Rabbit Ig	RB24088

Application Data:

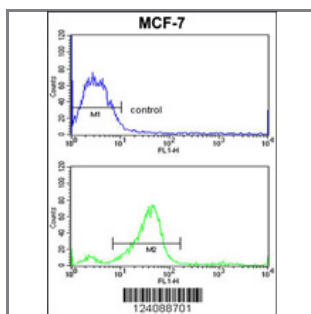
Calculated MW: 24950 Da



Western blot analysis of CHMP4B Antibody (N-term) (Cat. #AP9528a) in SK-BR-3 cell line lysates (35ug/lane).CHMP4B (arrow) was detected using the purified Pab.



Formalin-fixed and paraffin-embedded human breast carcinoma reacted with CHMP4B Antibody (N-term), which was peroxidase-conjugated to the secondary antibody, followed by DAB staining. This data demonstrates the use of this antibody for immunohistochemistry; clinical relevance has not been evaluated.



CHMP4B Antibody (N-term) (Cat. #AP9528a) flow cytometric analysis of MCF-7 cells (bottom histogram) compared to a negative control cell (top histogram).FITC-conjugated goat-anti-rabbit secondary antibodies were used for the analysis.

Gene ID:	Gene Symbol:
128866	CHMP4B

Other Names:

SNF7 homolog associated with Alix 1; SNF7-2, hSnf7-2; Vacuolar protein sorting-associated protein 32-2, Vps32-2; hVps32-2; Chromatin-modifying protein 4b, CHMP4b; Charged multivesicular body protein 4b; SHAX1, C20orf178, CHMP4B

Target/Specificity:

This CHMP4B antibody is generated from rabbits immunized with a KLH conjugated synthetic peptide between 58~87 amino acids from the C-terminal region of human DIO3.

Application Notes:

The suggested dilution is:

ELISA 1:1,000

Western blotting 1:100~500

Immunohistochemistry 1:50~100

Flow cytometric 1:10~50

Format:

Purified polyclonal antibody supplied in PBS with 0.09% (W/V) sodium azide. This antibody is purified through a protein A column, followed by peptide affinity purification.

Storage:

Maintain refrigerated at 2-8°C for up to 6 months. For long term storage store at -20°C in small aliquots to prevent freeze-thaw cycles.

Precautions:

CHMP4B Antibody (N-term) is for research use only and not for use in diagnostic or therapeutic procedures.
