

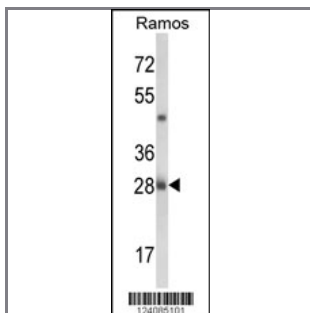
## NUCKS1 Antibody (N-term)

### Peptide Affinity Purified Rabbit Polyclonal Antibody (Pab)

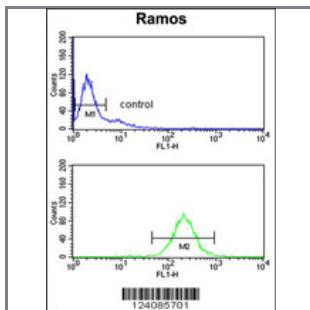
Catalog #	Applications:	Reactivity:	Accessions:
AP9527a	WB, FC, E	H	<a href="#">Q9H1E3</a> , <a href="#">NP_073568</a>

Concentration:	Size:	Isotype:	Clone Name:
0.25 mg/ml	0.1 mg	Rabbit Ig	RB24085

#### Application Data: Calculated MW: 27296 Da



Western blot analysis of NUCKS1 Antibody (N-term) (Cat. #AP9527a) in Ramos cell line lysates (35ug/lane). NUCKS1 (arrow) was detected using the purified Pab.



NUCKS1 Antibody (N-term) (Cat. #AP9527a) flow cytometry analysis of Ramos cells (bottom histogram) compared to a negative control cell (top histogram). FITC-conjugated goat-anti-rabbit secondary antibodies were used for the analysis.

Gene ID:	Gene Symbol:
<a href="#">64710</a>	NUCKS1

#### Other Names:

P1; Nuclear ubiquitous casein and cyclin-dependent kinases substrate; JC7, NUCKS, NUCKS1

#### Target/Specificity:

This NUCKS1 antibody is generated from rabbits immunized with a KLH conjugated synthetic peptide between 52~81 amino acids from the N-terminal region of human NUCKS1.

#### Application Notes:

The suggested dilution is:  
ELISA 1:1,000

Western blotting 1:100~500

Flow cytometry 1:10~50

---

**Format:**

Purified polyclonal antibody supplied in PBS with 0.09% (W/V) sodium azide. This antibody is purified through a protein A column, followed by peptide affinity purification.

---

**Storage:**

Maintain refrigerated at 2-8°C for up to 6 months. For long term storage store at -20°C in small aliquots to prevent freeze-thaw cycles.

---

**Precautions:**

NUCKS1 Antibody (N-term) is for research use only and not for use in diagnostic or therapeutic procedures.

---