

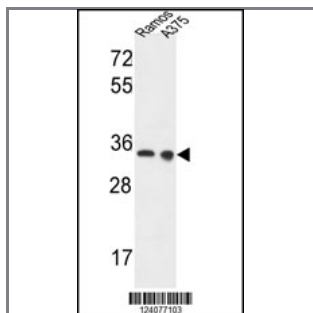
## LDHA Antibody (Center)

### Peptide Affinity Purified Rabbit Polyclonal Antibody (Pab)

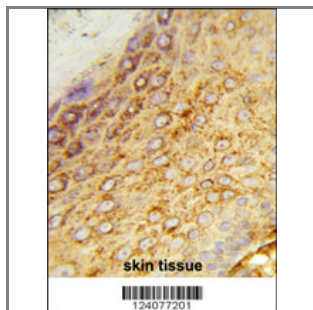
|                  |                      |                    |                        |
|------------------|----------------------|--------------------|------------------------|
| <b>Catalog #</b> | <b>Applications:</b> | <b>Reactivity:</b> | <b>Accessions:</b>     |
| AP9523c          | WB, IF, FC, IHC, E   | H                  | <a href="#">P00338</a> |

|                       |              |                 |                    |
|-----------------------|--------------|-----------------|--------------------|
| <b>Concentration:</b> | <b>Size:</b> | <b>Isotype:</b> | <b>Clone Name:</b> |
| 0.25 mg/ml            | 0.1 mg       | Rabbit Ig       | RB24077            |

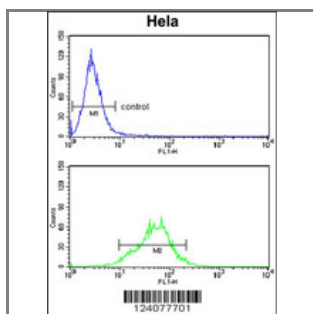
**Application Data:** **Calculated MW: 36689 Da**



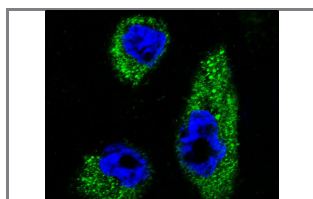
LDHA Antibody (Center) (Cat. #AP9523c) western blot analysis in Ramos A375 cell line lysates (35ug/lane). This demonstrates the LDHA antibody detected the LDHA protein (arrow).



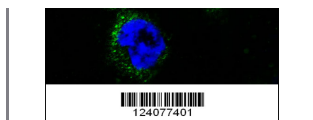
Formalin-fixed and paraffin-embedded human skin tissue reacted with LDHA Antibody (Center), which was peroxidase-conjugated to the secondary antibody, followed by DAB staining. This data demonstrates the use of this antibody for immunohistochemistry; clinical relevance has not been evaluated.



LDHA Antibody (Center) (Cat. #AP9523c) flow cytometry analysis of HeLa cells (bottom histogram) compared to a negative control cell (top histogram). FITC-conjugated goat-anti-rabbit secondary antibodies were used for the analysis.



Confocal immunofluorescent analysis of LDHA Antibody (Center) (Cat. #AP9523c) with A375 cell followed by Alexa Fluor 488-conjugated goat anti-rabbit IgG (green). DAPI was used to stain the cell nuclei (blue).



nuclear (blue).

---

**Gene ID:**

3939

**Gene Symbol:**

LDHA

---

**Other Names:**

Cell proliferation-inducing gene 19 protein; Renal carcinoma antigen NY-REN-59; LDH muscle subunit, LDH-M; L-lactate dehydrogenase A chain, LDH-A; PIG19, LDHA

---

**Target/Specificity:**

This LDHA antibody is generated from rabbits immunized with a KLH conjugated synthetic peptide between 161~190 amino acids from the Central region of human LDHA.

---

**Application Notes:**

The suggested dilution is:

ELISA 1:1,000

Western blotting 1:100~500

Immunohistochemistry 1:50~100

Flow cytometry 1:10~50

Immunofluorescence 1:10~50

---

**Format:**

Purified polyclonal antibody supplied in PBS with 0.09% (W/V) sodium azide. This antibody is purified through a protein A column, followed by peptide affinity purification.

---

**Storage:**

Maintain refrigerated at 2-8°C for up to 6 months. For long term storage store at -20°C in small aliquots to prevent freeze-thaw cycles.

---

**Precautions:**

LDHA Antibody (Center) is for research use only and not for use in diagnostic or therapeutic procedures.

---