

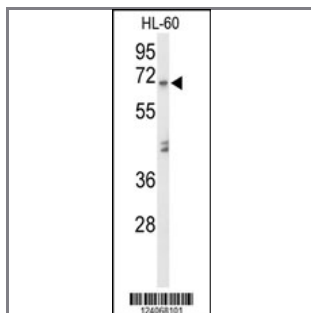
AMY1A Antibody (Center)

Peptide Affinity Purified Rabbit Polyclonal Antibody (Pab)

Catalog #	Applications:	Reactivity:	Accessions:
AP9519c	WB, FC, IHC, E	H	P04745

Concentration:	Size:	Isotype:	Clone Name:
0.25 mg/ml	0.1 mg	Rabbit Ig	RB24068

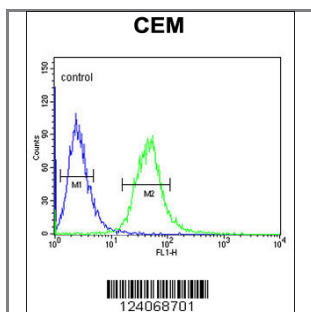
Application Data: Calculated MW: 57768 Da



Western blot analysis of AMY1A Antibody (Center) (Cat. #AP9519c) in HL-60 cell line lysates (35ug/lane). AMY1A (arrow) was detected using the purified Pab.



Formalin-fixed and paraffin-embedded human prostate carcinoma reacted with AMY1A Antibody (Center), which was peroxidase-conjugated to the secondary antibody, followed by DAB staining. This data demonstrates the use of this antibody for immunohistochemistry; clinical relevance has not been evaluated.



AMY1A Antibody (Center) (Cat. #AP9519c) flow cytometric analysis of CEM cells (right histogram) compared to a negative control cell (left histogram). FITC-conjugated goat-anti-rabbit secondary antibodies were used for the analysis.

Gene ID:	Gene Symbol:
278	AMY1A; AMY1B; AMY1C

Other Names:

Salivary alpha-amylase; 1,4-alpha-D-glucan glucanohydrolase 1; Alpha-amylase 1;AMY1, AMY1A

Target/Specificity:

This AMY1A antibody is generated from rabbits immunized with a KLH conjugated synthetic peptide between 202~231 amino acids from the Central region of human AMY1A.

Application Notes:

The suggested dilution is:

ELISA 1:1,000

Western blotting 1:100~500

Immunohistochemistry 1:50~100

Flow cytometric 1:10~50

Format:

Purified polyclonal antibody supplied in PBS with 0.09% (W/V) sodium azide. This antibody is purified through a protein A column, followed by peptide affinity purification.

Storage:

Maintain refrigerated at 2-8°C for up to 6 months. For long term storage store at -20°C in small aliquots to prevent freeze-thaw cycles.

Precautions:

AMY1A Antibody (Center) is for research use only and not for use in diagnostic or therapeutic procedures.
