

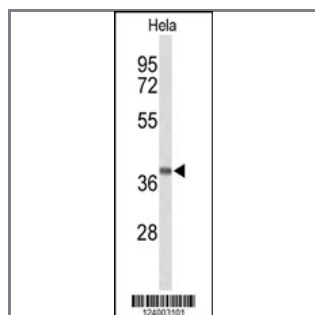
GPR65 Antibody (C-term)

Peptide Affinity Purified Rabbit Polyclonal Antibody (Pab)

Catalog #	Applications:	Reactivity:	Accessions:
AP9501b	WB, E	H	Q8IYL9
Concentration:	Size:	Isotype:	Clone Name:
0.25 mg/ml	0.1 mg	Rabbit Ig	RB24003

Application Data:

Calculated MW: 39333 Da



Western blot analysis of GPR65 Antibody (C-term) (Cat. #AP9501b) in HeLa cell line lysates (35ug/lane). GPR65 (arrow) was detected using the purified Pab.

Gene ID:	Gene Symbol:
8477	GPR65

Other Names:

T-cell death-associated gene 8 protein; G-protein coupled receptor 65; Psychosine receptor; TDAG8, GPR65

Target/Specificity:

This GPR65 antibody is generated from rabbits immunized with a KLH conjugated synthetic peptide between 245~275 amino acids from the C-terminal region of human GPR65.

Application Notes:

The suggested dilution is:

ELISA 1:1,000

Western blotting 1:100~500

Format:

Purified polyclonal antibody supplied in PBS with 0.09% (W/V) sodium azide. This antibody is purified through a protein A column, followed by peptide affinity purification.

Storage:

Maintain refrigerated at 2-8°C for up to 6 months. For long term storage store at -20°C in small aliquots to prevent freeze-thaw cycles.

Precautions:

GPR65 Antibody (C-term) is for research use only and not for use in diagnostic or therapeutic procedures.
