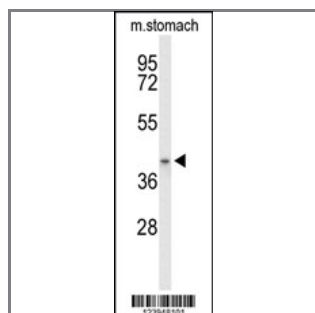


## ACAD8 Antibody (Center)

### Peptide Affinity Purified Rabbit Polyclonal Antibody (Pab)

<b>Catalog #</b>	<b>Applications:</b>	<b>Reactivity:</b>	<b>Accessions:</b>
AP9488c	WB, E	H, M	<a href="#">Q9UKU7</a>
<b>Concentration:</b>	<b>Size:</b>	<b>Isotype:</b>	<b>Clone Name:</b>
0.25 mg/ml	0.1 mg	Rabbit Ig	RB23948

#### Application Data: Calculated MW: 45070 Da



Western blot analysis of ACAD8 Antibody (Center) (Cat. #AP9488c) in mouse stomach tissue lysates (35ug/lane). ACAD8 (arrow) was detected using the purified Pab.

<b>Gene ID:</b>	<b>Gene Symbol:</b>
<a href="#">27034</a>	ACAD8

#### Other Names:

Activator-recruited cofactor 42 kDa component, ARC42; Acyl-CoA dehydrogenase family member 8, ACAD-8; Isobutyryl-CoA dehydrogenase, mitochondrial; IBD, ARC42, ACAD8

#### Target/Specificity:

This ACAD8 antibody is generated from rabbits immunized with a KLH conjugated synthetic peptide between 125~154 amino acids from the Central region of human ACAD8.

#### Application Notes:

The suggested dilution is:  
 ELISA 1:1,000  
 Western blotting 1:100~500

#### Format:

Purified polyclonal antibody supplied in PBS with 0.09% (W/V) sodium azide. This antibody is purified through a protein A column, followed by peptide affinity purification.

#### Storage:

Maintain refrigerated at 2-8°C for up to 6 months. For long term storage store at -20°C in small aliquots to prevent freeze-thaw cycles.

---

**Precautions:**

ACAD8 Antibody (Center) is for research use only and not for use in diagnostic or therapeutic procedures.

---