

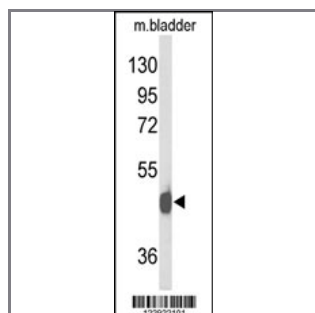
NPY2R Antibody (N-term)

Peptide Affinity Purified Rabbit Polyclonal Antibody (Pab)

Catalog #	Applications:	Reactivity:	Accessions:
AP9466a	WB, E	H, M	P49146
Concentration:	Size:	Isotype:	Clone Name:
0.25 mg/ml	0.1 mg	Rabbit Ig	RB22922

Application Data:

Calculated MW: 42731 Da



Western blot analysis of NPY2R Antibody (N-term) (Cat. #AP9466a) in mouse bladder tissue lysates (35ug/lane). DCN (arrow) was detected using the purified Pab.

Gene ID:	Gene Symbol:
4887	NPY2R

Other Names:

NPY-Y2 receptor, Y2 receptor; Neuropeptide Y receptor type 2, NPY2-R; NPY2R

Target/Specificity:

This NPY2R antibody is generated from rabbits immunized with a KLH conjugated synthetic peptide between 25~54 amino acids from the N-terminal region of human NPY2R.

Application Notes:

The suggested dilution is:

ELISA 1:1,000

Western blotting 1:100~500

Format:

Purified polyclonal antibody supplied in PBS with 0.09% (W/V) sodium azide. This antibody is purified through a protein A column, followed by peptide affinity purification.

Storage:

Maintain refrigerated at 2-8°C for up to 6 months. For long term storage store at -20°C in

small aliquots to prevent freeze-thaw cycles.

Precautions:

NPY2R Antibody (N-term) is for research use only and not for use in diagnostic or therapeutic procedures.
